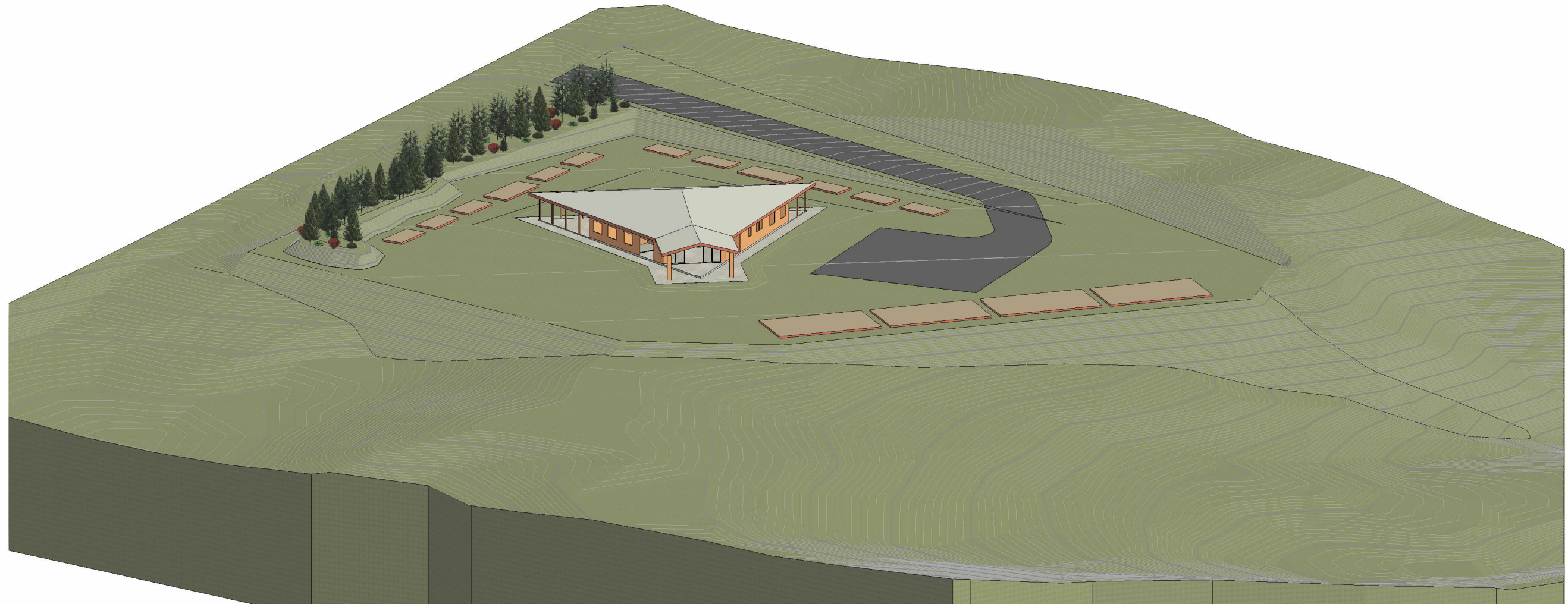
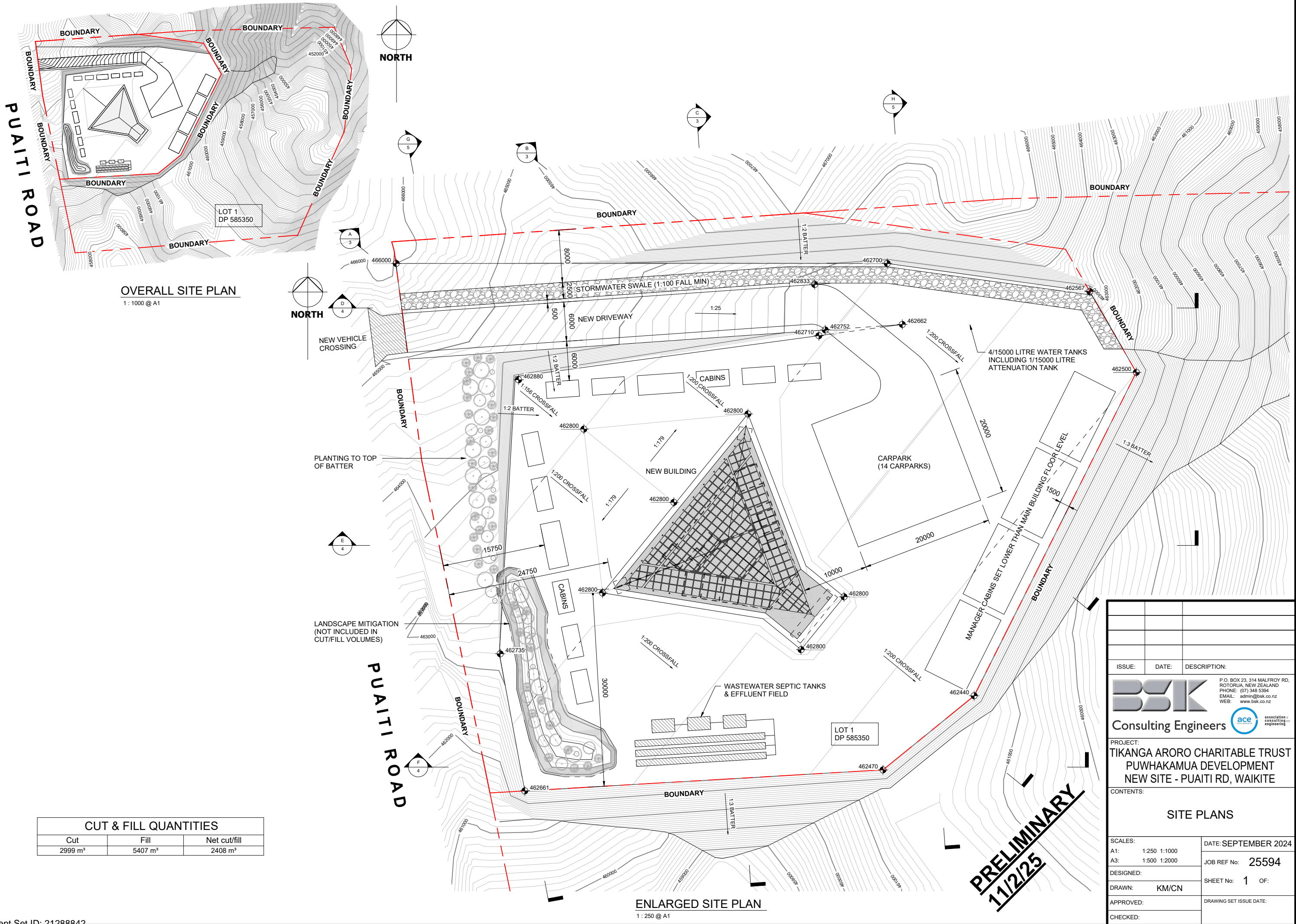


TIKANGA ARORO CHARITABLE TRUST
PUWHAKAMUA DEVELOPMENT NEW SITE
PUAITI ROAD, WAIKITE



PRELIMINARY
11/2/25

JOB REF No: 25594
ISSUE: PRELIMINARY
DATE: 26 SEPTEMBER 2024



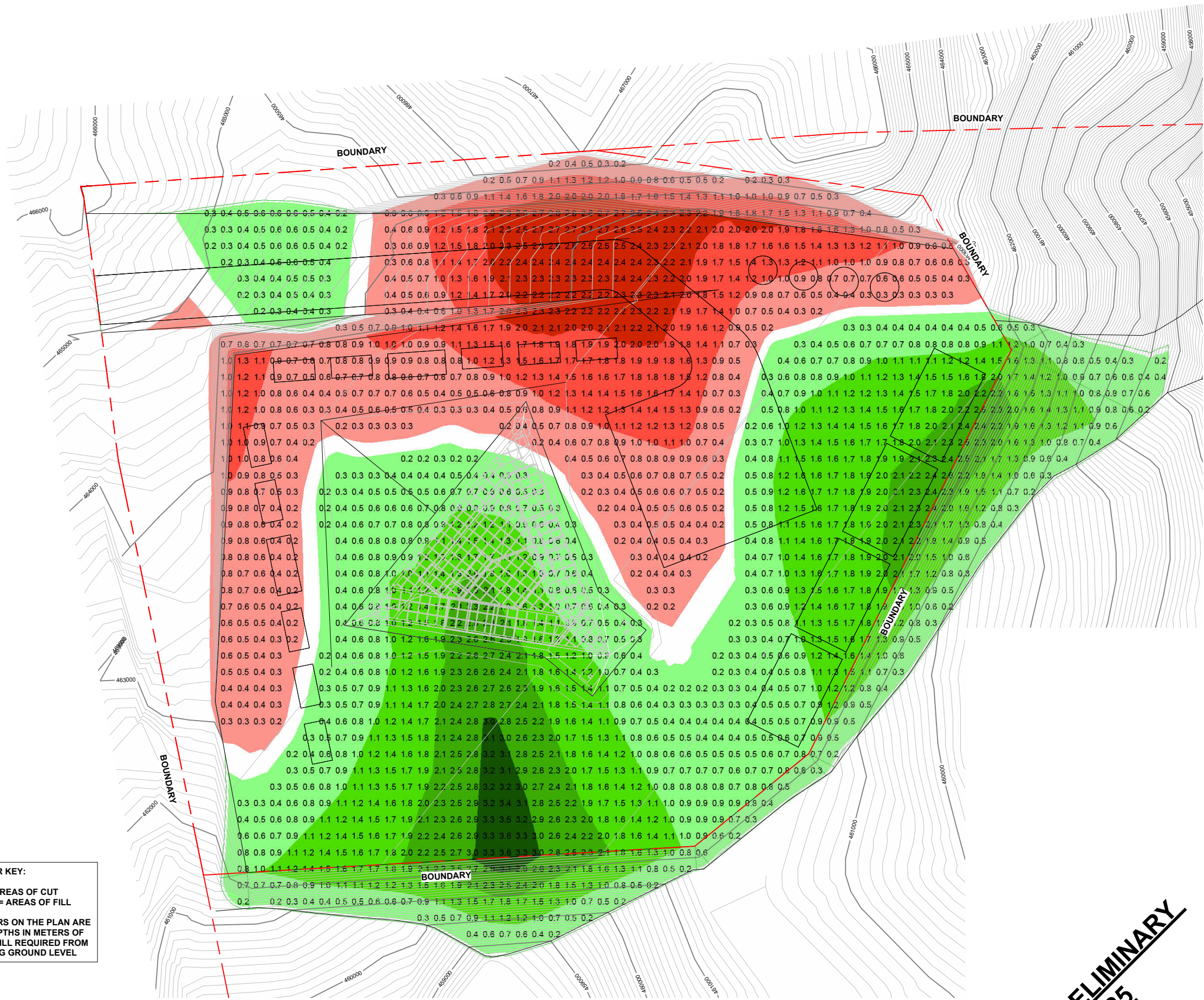
OVERALL SITE PLAN
1 : 1000 @ A1

ENLARGED SITE PLAN
1 : 250 @ A1

CUT & FILL QUANTITIES		
Cut	Fill	Net cut/fill
2999 m³	5407 m³	2408 m³

P.O. BOX 23, 314 MALFROY RD, ROTORUA, NEW ZEALAND PHONE: (07) 348 5394 EMAIL: admin@bsk.co.nz WEB: www.bsk.co.nz		
Consulting Engineers		
PROJECT: TIKANGA ARORO CHARITABLE TRUST PUWHAKAMUA DEVELOPMENT NEW SITE - PUAITI RD, WAIKITE		
CONTENTS: SITE PLANS		
SCALES: A1: 1:250 1:1000 A3: 1:500 1:2000		DATE: SEPTEMBER 2024
DESIGNED:		JOB REF No: 25594
DRAWN: KM/CN		SHEET No: 1 OF:
APPROVED:		DRAWING SET ISSUE DATE:
CHECKED:		

PRELIMINARY
11/2/25

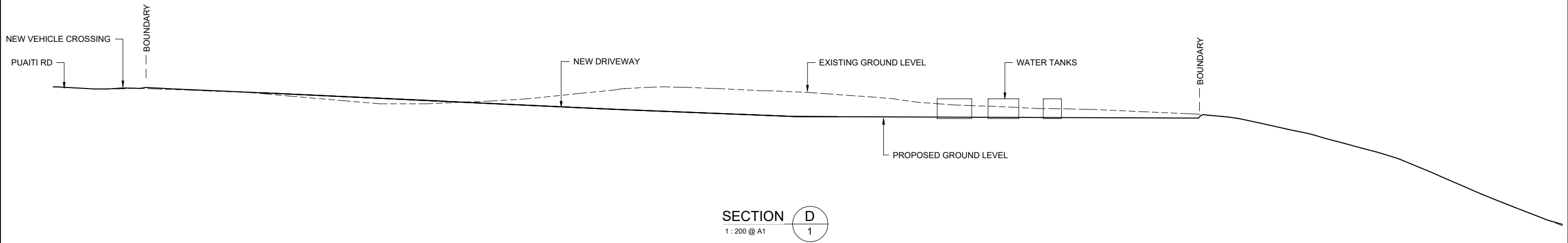


COLOUR KEY:
RED = AREAS OF CUT
GREEN = AREAS OF FILL
NUMBERS ON THE PLAN ARE THE DEPTHS IN METERS OF CUT & FILL REQUIRED FROM EXISTING GROUND LEVEL

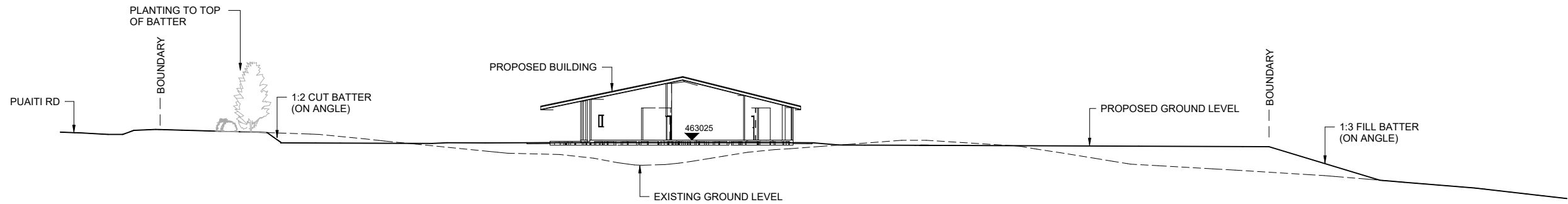
ENLARGED SITE PLAN WITH CUT/FILL DEPTHS
1 : 250 @ A1

PRELIMINARY
11/2/25

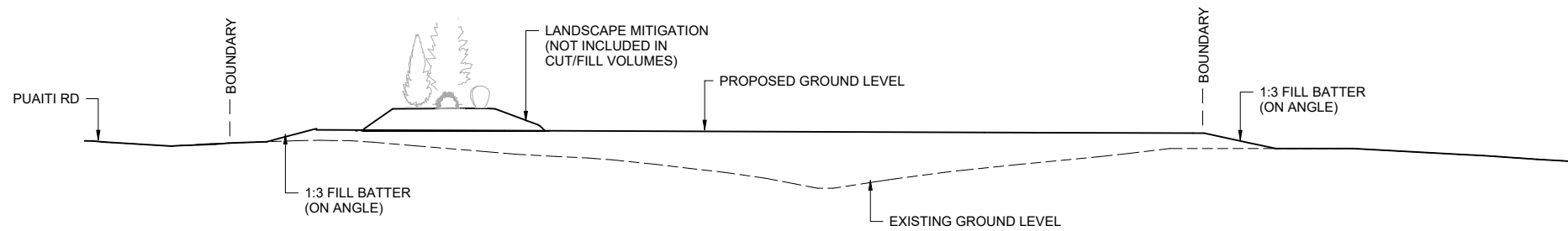
ISSUE:	DATE:	DESCRIPTION:
<div><div><div><div><div></div><div>BSK</div></div><div>Consulting Engineers</div></div><div><div><div>P.O. BOX 23, 314 MALFROY RD, ROTORUA, NEW ZEALAND PHONE: (07) 348 5394 EMAIL: admin@bsk.co.nz WEB: www.bsk.co.nz</div><div><div>ace</div><div>association of consulting engineers</div></div></div></div></div></div>		
PROJECT: TIKANGA ARORO CHARITABLE TRUST PUWHAKAMUA DEVELOPMENT NEW SITE - PUAITI RD, WAIKITE		
CONTENTS: ENLARGED SITE PLAN WITH CUT/FILL DEPTHS		
SCALES: A1: 1:250 A3: 1:500		DATE: SEPTEMBER 2024
DESIGNED:		JOB REF No: 25594
DRAWN: KM/CN		SHEET No: 2 OF:
APPROVED:		DRAWING SET ISSUE DATE:
CHECKED:		



SECTION **D**
1 : 200 @ A1



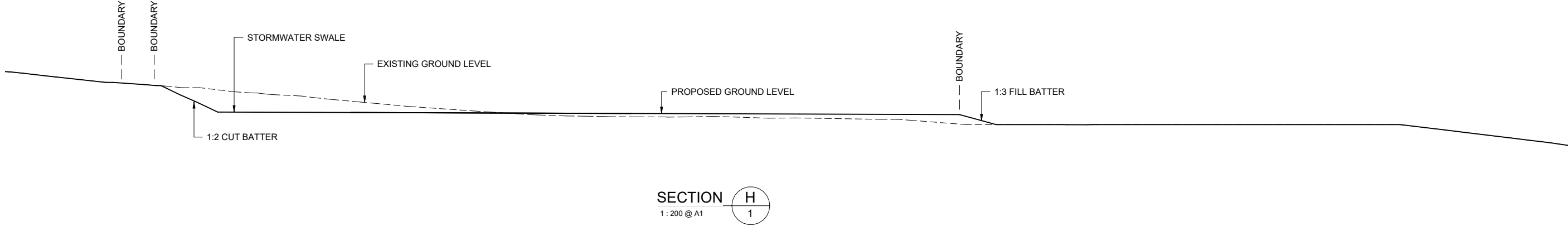
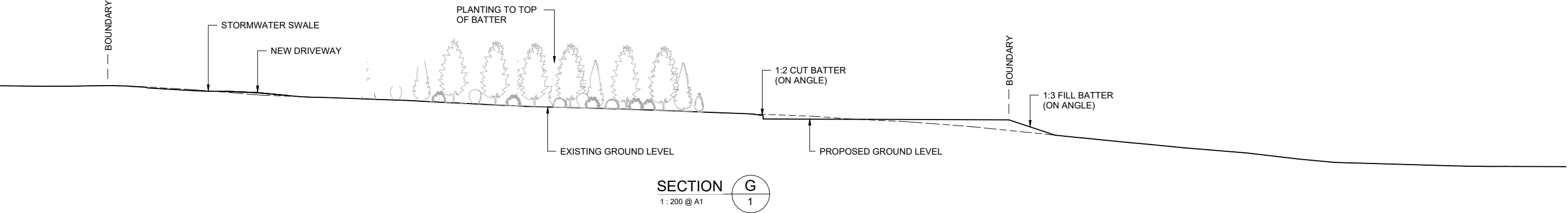
SECTION **E**
1 : 200 @ A1



SECTION **F**
1 : 200 @ A1

PRELIMINARY
11/2/25

ISSUE:	DATE:	DESCRIPTION:
<div><div><div>BSK</div><div>Consulting Engineers</div></div><div><div><div>P.O. BOX 23, 314 MALFROY RD, Rotorua, New Zealand PHONE: (07) 348 5394 EMAIL: admin@bsk.co.nz WEB: www.bsk.co.nz</div><div><div>ace</div><div>association of consulting engineers</div></div></div></div></div>		
PROJECT: TIKANGA ARORO CHARITABLE TRUST PUWHAKAMUA DEVELOPMENT NEW SITE - PUAITI RD, WAIKITE		
CONTENTS: CROSS SECTIONS		
SCALES: A1: 1:200 A3: 1:400		DATE: SEPTEMBER 2024
DESIGNED:		JOB REF No: 25594
DRAWN: KM/CN		SHEET No: 4 OF:
APPROVED:		DRAWING SET ISSUE DATE:
CHECKED:		



PRELIMINARY
11/2/25

ISSUE:	DATE:	DESCRIPTION:
<div><div><div><div>BSK</div><div>Consulting Engineers</div></div><div><div><div>P.O. BOX 23, 314 MALFROY RD, ROTORUA, NEW ZEALAND PHONE: (07) 348 5394 EMAIL: admin@bsk.co.nz WEB: www.bsk.co.nz</div><div><div>ace</div><div>association of consulting engineers</div></div></div></div></div></div>		
PROJECT: TIKANGA ARORO CHARITABLE TRUST PUWHAKAMUA DEVELOPMENT NEW SITE - PUAITI RD, WAIKITE		
CONTENTS: CROSS SECTIONS		
SCALES: A1: 1:200 A3: 1:400		DATE: SEPTEMBER 2024
DESIGNED:		JOB REF No: 25594
DRAWN: KM/CN		SHEET No: 5 OF:
APPROVED:		DRAWING SET ISSUE DATE:
CHECKED:		