
From: Marc Spijkerbosch
Sent: Friday, 3 August 2018 9:12 a.m.
To: 'Craig Wilson'
Subject: RE: Hemo Emergency Meeting

Thanks Craig – I'll send through a request ok.
Enjoy your weekend!
Cheers

Marc Spijkerbosch Community Arts Advisor
P: 07 351 8154 | E: marc.spijkerbosch@rotorualc.nz | W: rotorualakescouncil.nz

From: Craig Wilson [<mailto:craigw@kilwell.co.nz>]
Sent: Friday, 3 August 2018 9:11 a.m.
To: Marc Spijkerbosch
Subject: RE: Hemo Emergency Meeting

Can do any time after 3pm till 5.30?

From: Marc Spijkerbosch <Marc.Spijkerbosch@rotorualc.nz>
Sent: Friday, 3 August 2018 8:54 AM
To: Craig Wilson <craigw@kilwell.co.nz>
Subject: RE: Hemo Emergency Meeting

Morning Craig
Just caught up on things -certainly been a few challenges on this project, but ultimately we'll get there.
Any chance you'd be free around 2pm next Tuesday to catch up with myself, Nick and Stewart?
Cheers

Marc Spijkerbosch Community Arts Advisor
P: 07 351 8154 | E: marc.spijkerbosch@rotorualc.nz | W: rotorualakescouncil.nz

From: Craig Wilson [<mailto:craigw@kilwell.co.nz>]
Sent: Thursday, 2 August 2018 11:42 a.m.
To: nick@tepuia.com; Marc Spijkerbosch; Stewart Brown
Subject: Hemo Emergency Meeting
Importance: High

Hi Gents,

Just giving a heads up to see if everyone is available for a call this afternoon to discuss the Hemo.

I can do anytime after 3pm – may I suggest 4pm?

Regards

Craig Wilson (BMS, CA)
Chief Executive | Kilwell Sports Group
P: +64 (0)7 345 9094 Extn 832 M: +64 (0)21 2331190 or F: +64 (0)7 345 5149

Email. Craigw@kilwell.co.nz | Web www.kilwell.co.nz or www.kilwellfibretube.co.nz

490 Te Ngae Road, Rotorua 3010

Private Bag 3033, Rotorua 3046, New Zealand

KILWELL Where Adventures Begin



[Like us on Facebook](#)

Please consider the environment before printing this e-mail

The information in this email is confidential. It is intended solely for the addressee, access to this email by anyone else is unauthorised.

If you are not the intended recipient, any disclosure, copying, distribution or any action taken or omitted to be taken in reliance on it is prohibited.

Click [here](#) to report this email as spam.

This message has been scanned for malware by Websense. www.websense.com

From: Craig Wilson [<mailto:craigw@kilwell.co.nz>]
Sent: Wednesday, 8 August 2018 11:14 a.m.
To: Vicki Cawte
Cc: Stewart Brown
Subject: RE: Meeting yesterday

Hi Vicki,

The decision was to go ahead with the visit from the councillors but to look at doing the video at a later stage. To be honest with the construction so far is not that impressive as they are still all in individual lengths and the thought was to look at doing it when it gets closer to final assembly, say when the individual lengths have been assembled into one of the helix's and there is something more impressive to see (and video).

Regards
Craig

From: Vicki Cawte <Vicki.Cawte@rotorualc.nz>
Sent: Wednesday, 8 August 2018 10:17 AM
To: Craig Wilson <craigw@kilwell.co.nz>
Subject: Meeting yesterday

Kia ora Craig

Just checking in to see how your meeting went yesterday and whether there was any thoughts from the team on a potential video to document the sculpture process?

Ngā mihi

Vicki Cawte *Communications Advisor*

P: 07 351 8044 | M: 027 937 4606

E: vicki.cawte@rotorualc.nz | W: rotorualakescouncil.nz

A: 1061 Haupapa St, Private Bag 3029, Rotorua Mail Centre, Rotorua 3046, New Zealand

ROTORUA
LAKES COUNCIL

Caution: The content of this email is confidential and may be legally privileged. If it is not intended for you, please email the sender immediately and destroy the original message. You may not copy, disclose or use the contents in any way. Thank You.

This message has been scanned for malware by Websense. www.websense.com

Click [here](#) to report this email as spam.

From: Craig Wilson <craigw@kilwell.co.nz>
Sent: Thursday, 16 August 2018 1:32 p.m.
To: Marc Spijkerbosch
Subject: FW: Hemo Sculpture Transcript
Attachments: 160818_TVNZ_Kilwell transcript_v01_MC.docx

Hi Marc,

With Stewart out of office – could you respond on his behalf.

Regards
Craig

From: Craig Wilson
Sent: Thursday, 16 August 2018 1:24 PM
To: nick@tepuia.com; Stewart Brown <Stewart.Brown@rotorualc.nz>
Subject: FW: Hemo Sculpture Transcript

Hi,

We had TVNZ in the other day recording a story on our 85th and 50th Anniversary. In the course of the interview by Sam Kelway (TVNZ) and Geoff & Amanda they asked about the sculpture as attached. They plan to have this on 7 Sharp over this weekend.

Could you both read through and let me know if this would cause problems. I understand they have already been in touch with Dave Donaldson for further information on the sculpture itself which we have already told them is not ready for discussion. I am ok as it mentions nothing about how or when and only mentions that we are making it but would prefer “name associated” or “have been able to help out” with (instead of “our name on the on the side of”). They have no photos or other information on the project.

Please have a read through attached and I will call shortly to get your feedback.

Regards
Craig

From: Amanda Wells
Sent: Thursday, 16 August 2018 12:45 PM
To: Craig Wilson <craigw@kilwell.co.nz>; Geoff Wells <geoffw@kilwell.co.nz>
Subject: Fwd: Hemo Sculpture Transcript

Regards,

Amanda

From: Melissa Cullen <melissa@shinepr.co.nz>

Sent: Thursday, August 16, 2018 12:19:38 PM

To: Amanda Wells

Subject: Hemo Sculpture Transcript

Hi Amanda,

I have gone through the interview footage, as discussed and attached the transcript. Do you want to run this by Craig etc and I will then get back in touch with Sam and make sure nothing further is mentioned.

Speak soon!



Melissa Cullen – Communications Consultant

+64 27 303 5113 || [4/144 Third Avenue, Tauranga](mailto:melissa@shinepr.co.nz) || www.shinepr.co.nz

This communication contains information that is confidential and which may be subject to legal privilege or subject to copyright. If you are not the intended recipient, you are asked to respect the confidentiality and not to disclose, use, distribute or copy the contents of this communication. If you have received this communication in error, please notify us immediately by reply e-mail or collect telephone call to [+64 21 577 871](tel:+6421577871) and destroy the original. We virus scan all e-mails and electronic media but are not responsible for any virus. In addition, we will not accept responsibility for any changes made to this email or any attachment after transmission from Shine PR Ltd. Thank you

Click [here](#) to report this email as spam.

Kilwell transcript (details on Hemo sculpture) - RAW

Sam: The project at Te Puia can we mention that briefly, the fact that you're building that structure at the middle of the roundabout – is that something we can talk about?

Amanda: Yes, I guess so

Sam: I guess also the company, or the name will live on in quite an incredible structure that you're building at a roundabout here in Rotorua – tell us a bit about that...

Geoff: Yea, it is really exciting. It is a project that came a little bit out of left field late last year, when we took a look at trying to build a structure that had been commissioned and designed, but the original design was having some issues and problems around what it was going to be built with and we came up with a plan to have a go ourselves using some different methods. Using 3D printers and carbon fiber material and manufacturing that we do know and are putting together the structure at the moment. So, yea it is really exciting, very different, very new; a completely new method of construction that we don't believe anyone has ever done before. So, we've got no one to help us along the way. But, it is great fun. It is very rewarding for the team to be involved in something that is actually going to be in a prominent place in town and Rotorua could well be known for. So, to have our name on the side of that is going to be pretty special as well.

From: Marc Spijkerbosch
Sent: Monday, 20 August 2018 7:47 a.m.
To: 'Craig Wilson'; nick@tepuia.com; Stewart Brown
Subject: RE: Hemo sculpture model variations

Thanks for the update Craig – fortunate to have James on board for sure.
Reckon we're due for some smooth sailing at some point!

Keep us posted
Cheers

Marc Spijkerbosch Community Arts Advisor
P: 07 351 8154 | E: marc.spijkerbosch@rotorualc.nz | W: rotorualakescouncil.nz

From: Craig Wilson [mailto:craigw@kilwell.co.nz]
Sent: Friday, 17 August 2018 5:00 p.m.
To: nick@tepuia.com; Marc Spijkerbosch; Stewart Brown
Subject: FW: Hemo sculpture model variations

Hi All,

Looks like we have another issue which James has found with the files Derek supplied. It looks like he changed the scaling from the initial design we were supplied. This means the diameter of the bottom tubes which go into the foundations will not match the current bade plate bolts placed in the concrete plinth. Fortunately the file we supplied to James which he used to slice up the inner tubes were from the original file he sent us and still match the installed plinth design. Also since we have not started making the base plate for the plinth we can change the outer ring design to still align bolt holes with the plinth – we have a conference call again with Derek & James on Monday to go over this.

So glad we got James to peer review this – as if not we would have had to remake the outer ring as it would not have accepted the tubes we have made so far!

I will update all again after Mondays call – after which we will contact Tony from Protech to update him on any design changes to the base plate.

Regards

Craig Wilson (BMS, CA)
Chief Executive | Kilwell Sports Group
P: +64 (0)7 345 9094 Extn 832 M: +64 (0)21 2331190 or F: +64 (0)7 345 5149
Email: Craigw@kilwell.co.nz | Web www.kilwell.co.nz or www.kilwellfibretube.co.nz
490 Te Ngae Road, Rotorua 3010
Private Bag 3033, Rotorua 3046, New Zealand

KILWELL

Where Adventures Begin



Like us on Facebook

Please consider the environment before printing this e-mail

The information in this email is confidential. It is intended solely for the addressee, access to this email by anyone else is unauthorised.
If you are not the intended recipient, any disclosure, copying, distribution or any action taken or omitted to be taken in reliance on it is prohibited.

From: Marc Spijkerbosch
Sent: Thursday, 23 August 2018 1:32 p.m.
To: Craig Wilson (craigw@kilwell.co.nz)
Cc: Nick Dallimore (nick@tepuia.com)
Subject: FW: Hemo sculpture installation plan

Hi Craig

Fyi – looks like we'll need to move on this asap - better to find out early if there will be any issues around this.

Let me know where I can help more (Council contacts etc), and obviously get in touch with Chris directly if that will be a smoother approach.

Talk soon then

Cheers

Marc

Marc Spijkerbosch Community Arts Advisor
P: 07 351 8154 | E: marc.spijkerbosch@rotorualc.nz | W: rotorualakescouncil.nz

From: Chris Farnsworth [<mailto:Chris.Farnsworth@nzta.govt.nz>]
Sent: Thursday, 23 August 2018 10:26 a.m.
To: Marc Spijkerbosch
Subject: Hemo sculpture installation plan

Hi Marc

Just approved the RLC invoice for Hemo sculpture, so that should remove that issue for you.

Have you/Kilwell formed a Traffic Impact plan yet for installation of the sculpture?

If not you need to get a draft plan or idea circulated as soon as possible to NZTA, the Network Ops Contractor (Higgins), and the Aviation Authority. They will then be able to guide you on if they are comfortable with the approach and what needs to be done. (If they say 'not comfortable' we have a problem so that's why this needs to happen now before we get too far down the track of the onsite build at Kilwell).

Mike.Russell@nzta.govt.nz – Network Manager

Nigel.DAth@nzta.govt.nz – Journey Manager

Network TMC at Higgins

RLCs traffic person

Im guessing installation will be an early Sunday morning thing with helicopter drop. It will likely require a full road closure to start while the sculpture is dropped in and the primary bolts installed.

This would be followed by 1 side of the roundabout closed for a crane to support the structure while the rest of the installation is completed. Which would allow us to have a stop/go using one side of the roundabout to shift traffic from each of the 3 roads.

Will have to plan for consecutive Sundays if poor weather as I doubt you will be given a yes to any weekday activity.

Will need to have a comms plan added to this as well and early advertising in media and using the road side VMS boards once the install dates are known.

There will be high interest so not only do we have to plan out the install traffic management, but the on-looker traffic management as well – ideally we would minimise this for the initial install and have an event once in place, but based on previous bridge lifts etc it will still draw a crowd.

Give me call if you would like to discuss.

Chris Farnsworth / Senior Project Manager
System Design and Delivery - Bay of Plenty

DDI 64 7 927 6017 / M 64 21 612 136

E chris.farnsworth@nzta.govt.nz / W nzta.govt.nz

Find the latest transport news, information, and advice on our website:

www.nzta.govt.nz

This email is only intended to be read by the named recipient. It may contain information which is confidential, proprietary or the subject of legal privilege. If you are not the intended recipient you must delete this email and may not use any information contained in it. Legal privilege is not waived because you have read this email.

Click [here](#) to report this email as spam.

From: Marc Spijkerbosch
Sent: Thursday, 23 August 2018 1:36 p.m.
To: 'Chris Farnsworth'
Subject: RE: Hemo sculpture installation plan

Thanks Chris

Yes, have been looking at this with Kilwell, though now sense the urgency so have asked Craig to move things forward. He may be in touch directly, or I'll give you a bell asap if we need to discuss further.

Back to you soon

Thanks again

Marc

Marc Spijkerbosch Community Arts Advisor
P: 07 351 8154 | E: marc.spijkerbosch@rotorualc.nz | W: rotorualakescouncil.nz

From: Chris Farnsworth [<mailto:Chris.Farnsworth@nzta.govt.nz>]
Sent: Thursday, 23 August 2018 10:26 a.m.
To: Marc Spijkerbosch
Subject: Hemo sculpture installation plan

Hi Marc

Just approved the RLC invoice for Hemo sculpture, so that should remove that issue for you.

Have you/Kilwell formed a Traffic Impact plan yet for installation of the sculpture?

If not you need to get a draft plan or idea circulated as soon as possible to NZTA, the Network Ops Contractor (Higgins), and the Aviation Authority. They will then be able to guide you on if they are comfortable with the approach and what needs to be done. (If they say 'not comfortable' we have a problem so that's why this needs to happen now before we get too far down the track of the onsite build at Kilwell).

Mike.Russell@nzta.govt.nz – Network Manager

Nigel.DAth@nzta.govt.nz – Journey Manager

Network TMC at Higgins

RLCs traffic person

Im guessing installation will be an early Sunday morning thing with helicopter drop. It will likely require a full road closure to start while the sculpture is dropped in and the primary bolts installed.

This would be followed by 1 side of the roundabout closed for a crane to support the structure while the rest of the installation is completed. Which would allow us to have a stop/go using one side of the roundabout to shift traffic from each of the 3 roads.

Will have to plan for consecutive Sundays if poor weather as I doubt you will be given a yes to any weekday activity.

Will need to have a comms plan added to this as well and early advertising in media and using the road side VMS boards once the install dates are known.

There will be high interest so not only do we have to plan out the install traffic management, but the on-looker traffic management as well – ideally we would minimise this for the initial install and have an event once in place, but based on previous bridge lifts etc it will still draw a crowd.

Give me call if you would like to discuss.

Chris Farnsworth / Senior Project Manager
System Design and Delivery - Bay of Plenty
DDI 64 7 927 6017 / M 64 21 612 136
E chris.farnsworth@nzta.govt.nz / W nzta.govt.nz

Find the latest transport news, information, and advice on our website:
www.nzta.govt.nz

This email is only intended to be read by the named recipient. It may contain information which is confidential, proprietary or the subject of legal privilege. If you are not the intended recipient you must delete this email and may not use any information contained in it. Legal privilege is not waived because you have read this email.

Click [here](#) to report this email as spam.

From: Craig Wilson <craigw@kilwell.co.nz>
Sent: Thursday, 23 August 2018 1:35 p.m.
To: Vicki Cawte; Stewart Brown; Marc Spijkerbosch
Cc: nick@tepuia.com
Subject: RE: NZTA query sculpture date

Hi Vicki,

At this stage we are looking for a tentative install date of late December.

I have spoken with Marc and this looks a realistic time as of now. However we still have plenty of work with regards final assembly, painting and base installation still to start. But this is our best estimate at this stage.

Please ensure this is not used publicly as we are still finalising exact timeframes.

Regards
Craig

From: Vicki Cawte <Vicki.Cawte@rotorualc.nz>
Sent: Thursday, 23 August 2018 11:57 AM
To: Stewart Brown <Stewart.Brown@rotorualc.nz>; Craig Wilson <craigw@kilwell.co.nz>; Marc Spijkerbosch <Marc.Spijkerbosch@rotorualc.nz>
Subject: NZTA query sculpture date

Kia ora koutou

NZTA have sent us a request for an update on the Hemo sculpture progress and instalment date. The Minister's office is after an update.

At your last meeting was there any discussion about providing an update to stakeholders? If not can someone give me a call and talk me through where we are at so I can give NZTA some info to pass on to the Minister's office.

Thanks

Ngā mihi

Vicki Cawte *Communications Advisor*

P: 07 351 8044 | M: 027 937 4606

E: vicki.cawte@rotorualc.nz | W: rotorualakescouncil.nz

A: 1061 Haupapa St, Private Bag 3029, Rotorua Mail Centre, Rotorua 3046, New Zealand

ROTORUA
LAKES COUNCIL

Caution: The content of this email is confidential and may be legally privileged. If it is not intended for you, please email the sender immediately and destroy the original message. You may not copy, disclose or use the contents in any way. Thank You.

This message has been scanned for malware by Websense. www.websense.com

From: Marc Spijkerbosch
Sent: Thursday, 20 September 2018 7:57 a.m.
To: 'Craig Wilson'
Subject: RE: update

Morning Craig
Thanks for the update – all sounding good.
Bet your team can't wait to get to the finish line.

Great that councillors are up for a tour tomorrow, I'm sure they'll all be impressed – and will appreciate the innovation/complexity involved in the project.

Cheers, thanks again
Marc

Marc Spijkerbosch Community Arts Advisor
P: 07 351 8154 | E: marc.spijkerbosch@rotorualc.nz | W: rotorualakescouncil.nz

From: Craig Wilson [<mailto:craigw@kilwell.co.nz>]
Sent: Wednesday, 19 September 2018 4:00 p.m.
To: Marc Spijkerbosch
Cc: nick@tepuia.com; William London
Subject: RE: update

Hi Marc,

Sorry for the delay I was away at the end of last week and been a hectic few days back so only just got to catch up with the guys yesterday on where we are at for the Hemo Sculpture.

- Printing is going well and we are still on track for finishing printing parts mid Nov-18.
- However it is taking more time than hoped to attach the chevrons to the completed tubes and do the testing pieces for Scion. We will have the first set ready to test next week. I expect this is due to us finding our way with the process required to make these, similar to how we began with the first of the outer tubes (which took 4 weeks and we can now do in a week).
- Fabrication of the main structure is now focused on the inner tubes – while we await the final sign off on the review of the inner tubes of Derek's is not quite done yet (should be by end of next week).
- The first 3 main inner tubes (of the 12) are nearing competition.
- Now that we have made the first of these we are going to ramp up production with another 2 new staff starting this week increase our capacity for the next 2-3 months.

We also have some of the RLC elected members coming out this Friday.

Regards

Craig Wilson (BMS, CA)
Chief Executive | Kilwell Sports Group
P: +64 (0)7 345 9094 Extn 832 M: +64 (0)21 2331190 or F: +64 (0)7 345 5149
Email: Craigw@kilwell.co.nz | Web www.kilwell.co.nz or www.kilwellfibretube.co.nz
490 Te Ngae Road, Rotorua 3010
Private Bag 3033, Rotorua 3046, New Zealand



Please consider the environment before printing this e-mail

The information in this email is confidential. It is intended solely for the addressee, access to this email by anyone else is unauthorised. If you are not the intended recipient, any disclosure, copying, distribution or any action taken or omitted to be taken in reliance on it is prohibited.

From: Marc Spijkerbosch <Marc.Spijkerbosch@rotorualc.nz>

Sent: Friday, 14 September 2018 9:53 AM

To: Craig Wilson <craigw@kilwell.co.nz>

Subject: update

Hi Craig

Nothing urgent at all, just that I'm catching up with Stewart later, so thought I'd update on progress if possible. I'm sure things are ticking along smoothly there, so just touching base.

Cheers

Marc Spijkerbosch *Community Arts Advisor*

P: 07 351 8154

E: marc.spijkerbosch@rotorualc.nz | W: rotorualakescouncil.nz

A: 1061 Haupapa St, Private Bag 3029, Rotorua Mail Centre, Rotorua 3046, New Zealand

ROTORUA
LAKES COUNCIL

This message has been scanned for malware by Websense. www.websense.com

Click [here](#) to report this email as spam.

From: Marc Spijkerbosch
Sent: Tuesday, 25 September 2018 4:04 p.m.
To: 'Craig Wilson'; Nick Dallimore; Stewart Brown
Subject: RE: Production Date Delay Message

Absolutely right Nick. Need to steer away from any timing issues and remind people we're breaking new ground here, and rising to the challenges admirably.
If anything, the real delay was in the quest to fabricate in stainless and questions from councillors probably a hangover from that.

Happy for you to engage Jacky – or perhaps a combined approach?

Marc Spijkerbosch Community Arts Advisor
P: 07 351 8154 | E: marc.spijkerbosch@rotorualc.nz | W: rotorualakescouncil.nz

From: Craig Wilson [mailto:craigw@kilwell.co.nz]
Sent: Tuesday, 25 September 2018 3:40 p.m.
To: Nick Dallimore; Marc Spijkerbosch; Stewart Brown
Subject: RE: Production Date Delay Message

Agreed from my end.

From: Nick Dallimore <nick@tepuia.com>
Sent: Tuesday, 25 September 2018 3:29 PM
To: Craig Wilson <craigw@kilwell.co.nz>; Marc Spijkerbosch <marc.spijkerbosch@rotorualc.nz>; Stewart Brown <stewart.brown@rotorualc.nz>
Subject: Re: Production Date Delay Message

I think this would be well worth our while getting our PR people to write this (or one of Stuart's team) as we need this to be a really positive message.

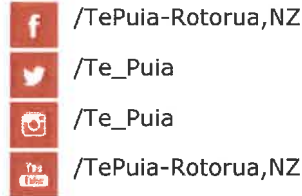
Readers need to be thinking wow about the process we have undertaken, not about how long or when the 'due date is'.

Thoughts?? I would be happy to coordinate Jacky from Shine PR to help work this up??

Nick Dallimore
Sent from my I Phone
027 2011536

Nick Dallimore
MANAGER – SPECIAL PROJECTS

D +64 7 343 1872
M +64 27 2011 536
E nick@tepuia.com
W www.tepuia.com



 HEMO ROAD, P.O. BOX 334, ROTORUA, 3040 NEW ZEALAND



From: Craig Wilson <craigw@kilwell.co.nz>
Sent: Tuesday, September 25, 2018 3:25 PM
To: Nick Dallimore; Marc Spijkerbosch; Stewart Brown
Subject: Production Date Delay Message

Hi All,

I have been asked by several of the council members that visited recently to provide an explanation for the delay in the delivery date of the Hemo Sculpture. I feel that although this is not a concern from any of the parties involved it is something we need to out there as questions will only increase.

Am also concerned with the amount of time it is taking to construct the testing sections of the Chevron and tube design that it is going to take longer than expected to out the finished tubes and sections together. Printing has been going well to plan, fabrication is going well, although slower than expected. But am mindful that we still have final assembly, mania plates, painting & then transportation to go. With this in mind I would think an early in the New Year date would be best.

I was thinking of something along the lines of below, but I am far from an expert in writing these up.

“Due to the unique production method and changing engineering specifications the completion date of the Hemo Sculpture has been delayed until early in the new year. At this stage there is no material change to overall project cost but we are committed to ensuring that the completed structure meets all required consent certifications.”

Thoughts?
Regards

Craig Wilson (BMS, CA)
Chief Executive | Kilwell Sports Group
P: +64 (0)7 345 9094 Extn 832 M: +64 (0)21 2331190 or F: +64 (0)7 345 5149
Email: Craigw@kilwell.co.nz | Web www.kilwell.co.nz or www.kilwellfibretube.co.nz
490 Te Ngae Road, Rotorua 3010
Private Bag 3033, Rotorua 3046, New Zealand

From: Craig Wilson <craigw@kilwell.co.nz>
Sent: Sunday, 30 September 2018 9:16 p.m.
To: Vicki Cawte; nick@tepuia.com; Marc Spijkerbosch; Stewart Brown
Subject: RE: Draft Hemo update video

Hi Vicki,

Thanks for putting this together, it looks good except for a couple of things :

1. Think it would pay to cut the time down significantly – I would think 2 mins max.
2. Need to reshoot me – Sorry, I think I must have been sick that week, as I have no energy, terrible posture and do not speak well at all. Also some of my answers are not great.

Can we reshoot this on my return (in 2 weeks). We are also getting a better response drafted to explain the delays which would be best to include as well.

Sorry for the delay but am not comfortable with the quality of my responses.

Regards
Craig

From: Vicki Cawte <Vicki.Cawte@rotorualc.nz>
Sent: Friday, 28 September 2018 10:42 AM
To: nick@tepuia.com; Craig Wilson <craigw@kilwell.co.nz>; Marc Spijkerbosch <Marc.Spijkerbosch@rotorualc.nz>; Stewart Brown <Stewart.Brown@rotorualc.nz>
Subject: Draft Hemo update video

Kia ora koutou

I have edited a video to be used as a progress update (hopefully within the next week) for the Hemo sculpture. It's 6 minutes long and still needs a few slight edits to make it flow seamlessly. The link to download it is below. It may take some time to download depending on what you're using.

Because it is quite long it has been suggested I break it up into chapters. I'm working on that at the moment but thought I would send it to everyone to make sure everyone is happy with the content.

This is purely just for a progress update so it doesn't include info about the design or the partners that are involved. I think for the purpose of the update I will focus on the challenges and just a general idea of the work that's been involved (the last two minutes of the video).

Let me know what you think or if you have any concerns.

Ngā mihi

Vicki Cawte

Kaitohu Whakapā

P: 07 351 8044 | M: 027 937 4606

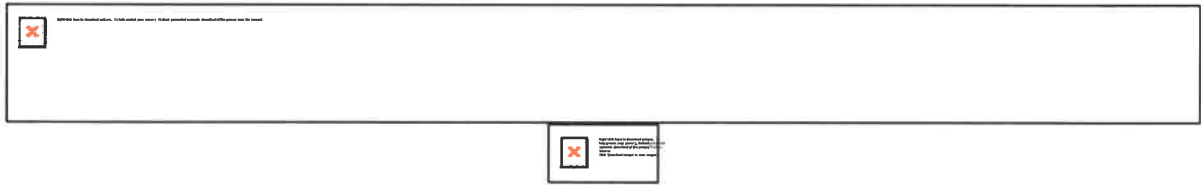
E: vicki.cawte@rotorualc.nz | W: rotorualakescouncil.nz

A: 1061 Haupapa St, Private Bag 3029, Rotorua Mail Centre, Rotorua 3046, New Zealand

ROTORUA
LAKES COUNCIL

Caution: The content of this email is confidential and may be legally privileged. If it is not intended for you, please email the sender immediately and destroy the original message. You may not copy, disclose or use the contents in any way. Thank You.

img



vicki.cawte@rotorualc.nz
sent you some files

1 file, 510 MB in total • Will be deleted on 4 October, 2018

Get your files

Download link

<https://wetransfer.com/downloads/702b9834d71f3bba4ac52112a6ee53be20180927220738/2bea1e11b5659aa801e273a72e30b96120180927220738/cfb60a>

1 file

71E71C99-C2B9-4383-B832-4F365F9B8D4B.MOV

From: Marc Spijkerbosch
Sent: Monday, 5 November 2018 2:10 p.m.
To: 'Craig Wilson'
Subject: RE: quote request

Perfect.
Thanks Craig.

Marc Spijkerbosch Community Arts Advisor
P: 07 351 8154 | E: marc.spijkerbosch@rotorualc.nz | W: rotorualakescouncil.nz

From: Craig Wilson [mailto:craigw@kilwell.co.nz]
Sent: Monday, 5 November 2018 1:19 p.m.
To: Marc Spijkerbosch
Subject: RE: quote request

No worries. All good now... hopefully.

From: Marc Spijkerbosch <Marc.Spijkerbosch@rotorualc.nz>
Sent: Monday, 5 November 2018 1:02 PM
To: Craig Wilson <craigw@kilwell.co.nz>
Subject: RE: quote request

Legend. Thanks Craig.
Only thing .. Rotorua Public Art Trust address should be:
P.O. Box 248
Rotorua 3040
Or simply take the address out.

Reckon they're quite pedantic so probably should get that right – my fault! So sorry for the extra hassle here.
Much appreciate this.

Marc Spijkerbosch Community Arts Advisor
P: 07 351 8154 | E: marc.spijkerbosch@rotorualc.nz | W: rotorualakescouncil.nz

From: Craig Wilson [mailto:craigw@kilwell.co.nz]
Sent: Monday, 5 November 2018 12:55 p.m.
To: Marc Spijkerbosch
Subject: RE: quote request

Hi Marc,

Changes as requested all done.

Cheers
Craig

From: Marc Spijkerbosch <Marc.Spijkerbosch@rotorualc.nz>
Sent: Monday, 5 November 2018 10:45 AM
To: Craig Wilson <craigw@kilwell.co.nz>
Subject: RE: quote request

Hi Craig
Sorry to come back to you on this, but hoped we could amend slightly?

Potential funders have requested that a quotation, **dated** currently, be made out directly to **The Rotorua Public Arts Trust**.

Hope this is do-able, really appreciate you actioning this.
Let me know if there's any queries ok.

Cheers, and thanks
Marc

Marc Spijkerbosch Community Arts Advisor
P: 07 351 8154 | E: marc.spijkerbosch@rotorualc.nz | W: rotorualakescouncil.nz

From: Craig Wilson [<mailto:craigw@kilwell.co.nz>]
Sent: Wednesday, 24 October 2018 12:50 p.m.
To: Marc Spijkerbosch
Subject: RE: quote request

Cheers Marc,

All signed (and spelling corrected!) copy attached.

Regards
Craig

From: Marc Spijkerbosch <Marc.Spijkerbosch@rotorualc.nz>
Sent: Wednesday, 24 October 2018 12:02 PM
To: Craig Wilson <craigw@kilwell.co.nz>
Subject: RE: quote request

Hi Craig
Sorry to have pestered your time, but really appreciate this – it's perfect.
Only change would be to spell Marc – not Mark, but not a biggie at all.

Thanks heaps
Marc

Marc Spijkerbosch Community Arts Advisor
P: 07 351 8154 | E: marc.spijkerbosch@rotorualc.nz | W: rotorualakescouncil.nz

From: Craig Wilson [<mailto:craigw@kilwell.co.nz>]
Sent: Wednesday, 24 October 2018 10:28 a.m.

To: Marc Spijkerbosch
Subject: RE: quote request

Hi Marc,

Sorry, hadn't forgotten just have a big issue we are dealing with for another customer.

Does attached work for you? I have included some of the fixed costs for items we had not finalised when we did the original pricing. Can you review and let me know if this is ok?

Regards

Craig Wilson (BMS, CA)

Chief Executive | Kilwell Sports Group

P: +64 (0)7 345 9094 Extn 832 M: +64 (0)21 2331190 or F: +64 (0)7 345 5149

Email: Craigw@kilwell.co.nz | Web www.kilwell.co.nz or www.kilwellfibretube.co.nz

490 Te Ngae Road, Rotorua 3010

Private Bag 3033, Rotorua 3046, New Zealand

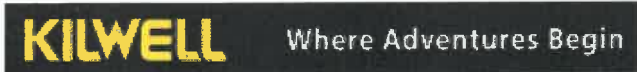


Winner

**Westpac Rotorua
Business Excellence
Awards 2018**

Ngāhau Kōwhiri | Award of Excellence | Westpac Rotorua

THE CHAMPIONS OF COMMERCIAL
ROTORUA



 [Like us on Facebook](#)

[Please consider the environment before printing this e-mail](#)

The information in this email is confidential. It is intended solely for the addressee, access to this email by anyone else is unauthorised. If you are not the intended recipient, any disclosure, copying, distribution or any action taken or omitted to be taken in reliance on it is prohibited.

From: Marc Spijkerbosch <Marc.Spijkerbosch@rotorualc.nz>

Sent: Wednesday, 24 October 2018 9:54 AM

To: Craig Wilson <craigw@kilwell.co.nz>

Subject: RE: quote request

Hi Craig

Sorry to pester – would you have a chance to put something together here?

Really appreciated! –

Cheers

Marc

Marc Spijkerbosch Community Arts Advisor

P: 07 351 8154 | E: marc.spijkerbosch@rotorualc.nz | W: rotorualakescouncil.nz

From: Craig Wilson [<mailto:craigw@kilwell.co.nz>]

Sent: Wednesday, 17 October 2018 11:31 a.m.

To: Marc Spijkerbosch

Subject: RE: quote request

Hi Marc,

Yep things are moving along – bit slower than hoped but we are getting there.

Did you just want a letter stating the total quote price of \$370,000?

Regards
Craig

From: Marc Spijkerbosch <Marc.Spijkerbosch@rotorualc.nz>
Sent: Wednesday, 17 October 2018 10:36 AM
To: Craig Wilson <craigw@kilwell.co.nz>
Subject: quote request

Hi Craig

Hope things are ticking along well there.

Just a small favour.

The Rotorua Public Art Trust have been helping with funding the Hemo sculpture and need a quote from Kilwell for your part of the project.

Obviously I have the numbers/breakdown here, but seems they need one with the Kilwell letterhead for a couple of their applications.

Hope this isn't too much of a pain, but wondered if you could organise something?
I think the deadline was for Tuesday next week.

Thanks heaps – let me know ok.

Cheers

Marc

Marc Spijkerbosch *Community Arts Advisor*

P: 07 351 8154

E: marc.spijkerbosch@rotorualc.nz | W: rotorualakescouncil.nz

A: 1061 Haupapa St, Private Bag 3029, Rotorua Mail Centre, Rotorua 3046, New Zealand

ROTORUA
LAKES COUNCIL

This message has been scanned for malware by Websense. www.websense.com

Click [here](#) to report this email as spam.

KILWELL FIBRETUBE
Composite Innovation

KILWELL FIBRETUBE LTD

490 Te Ngae Road
Private Bag 3033
Rotorua 3046
New Zealand

P +64 7 345 9093
F +64 7 345 5149
E admin@fibretube.co.nz
W www.kilwellfibretube.co.nz

November 5, 2018

The Rotorua Public Arts Trust
PO Box 248
Rotorua 3040

Att: Marc Spijkerbosch

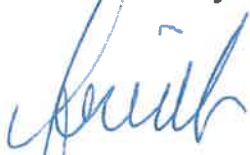
Please find confirmation of the Quote for the manufacture and supply of the Hemo Gorge Sculpture.

Price: \$370,000 + GST

This price includes :

- Manufacture and assembly of carbonfibre tubing to complete structure
- Arrow partitions between tubes (Chevrons – up to \$5,000)
- Base plate (up to \$12,000)
- Mania Side panels (up to \$1,000)
- Freight and onsite installation (up to \$4,400).

Yours Sincerely



Craig Wilson
Chief Executive

From: Marc Spijkerbosch
Sent: Wednesday, 7 November 2018 6:27 a.m.
To: 'Craig Wilson'; nick@tepuia.com
Subject: RE: Media inquiry - sculpture delay

Apologies for the delay Craig – but yes, this reads well.
Great to hear you're 80% printed. Look forward to next catch-up.
Cheers
Marc

Marc Spijkerbosch Community Arts Advisor
P: 07 351 8154 | E: marc.spijkerbosch@rotorualc.nz | W: rotorualakescouncil.nz

From: Craig Wilson [mailto:craigw@kilwell.co.nz]
Sent: Tuesday, 6 November 2018 4:05 p.m.
To: nick@tepuia.com; Marc Spijkerbosch
Subject: FW: Media inquiry - sculpture delay
Importance: High

Gents,

Are you all ok with the comment below in yellow – unfortunately they are wanting a reply to day to allow them to respond to some comments at council.

We have been struggling to get our testing equipment made and a date booked to allow us to test the Chevrons – but we now have next Thursday booked in for the testing at Scion. I will book in a next meeting for the week after to discuss results and progress.

As a quick heads up we are approx. 80% of the printing done, but still only 40% of the manufacturing done. We have been ramping up the production in the last month but still think a date of late Feb or early March is a more realistic date.

Regards

Craig Wilson (BMS, CA)
Chief Executive | Kilwell Sports Group
P: +64 (0)7 345 9094 Extn 832 M: +64 (0)21 2331190 or F: +64 (0)7 345 5149
Email: Craigw@kilwell.co.nz | Web www.kilwell.co.nz or www.kilwellfibretube.co.nz
490 Te Ngae Road, Rotorua 3010
Private Bag 3033, Rotorua 3046, New Zealand



Winner
**Westpac Rotorua
Business Excellence
Awards 2018**

Ngā ōhau Kōwhiri Pūwhiri Whānau Rotorua

OF CHAMBERLAIN & COMPANY
ROTORUA

KILWELL Where Adventures Begin

 [Like us on Facebook](#)

Please consider the environment before printing this e-mail

The information in this email is confidential. It is intended solely for the addressee, access to this email by anyone else is unauthorised. If you are not the intended recipient, any disclosure, copying, distribution or any action taken or omitted to be taken in reliance on it is prohibited.

From: Vicki Cawte <Vicki.Cawte@rotorualc.nz>
Sent: Tuesday, 6 November 2018 3:55 PM
To: Craig Wilson <craigw@kilwell.co.nz>
Subject: Media inquiry - sculpture delay

Kia ora Craig

We had a media inquiry following last week's Operations & Monitoring committee and some of the information Henry shared. We thought that since it is more operational it might be more appropriate coming from you?

I've drafted the response below based on your latest update to the team and also what we have provided to the media in the past. Are you happy for me to provide this response on your behalf? Please feel free to change it as you need.

Question is:

Henry says things are progressing well but there were "logistical difficulties in terms of timing" and that for "safety reasons" it wouldn't be installed until February.

I was after some clarification around, what are those safety reasons, and does the delay have anything to do with the crash at the end of August
(https://www.nzherald.co.nz/nz/news/article.cfm?c_id=1&objectid=12116798)?

Drafted response and clarification:

The printing and fabrication of the sculpture elements is going well however the testing of each of the elements is taking longer than expected. As discussed previously the scale of this project is entirely new concept globally so it is difficult to pinpoint how long certain parts of the process will take. The team involved also have to factor in final assembly, painting and transportation to the site.

Not for publication:

To clarify Mr Weston's comments re 'safety' he was speaking about a safe time estimate rather than physical safety of the site or sculpture. It was not related to the crash at the roundabout earlier this year.

Ngā mihi

Vicki Cawte

Kaitohu Whakapā

P: 07 351 8044 | M: 027 937 4606

E: vicki.cawte@rotorualc.nz | W: rotorualakescouncil.nz

A: 1061 Haupapa St, Private Bag 3029, Rotorua Mail Centre, Rotorua 3046, New Zealand

ROTORUA
LAKES COUNCIL

Caution: The content of this email is confidential and may be legally privileged. If it is not intended for you, please email the sender immediately and destroy the original message. You may not copy, disclose or use the contents in any way. Thank You.

From: Marc Spijkerbosch
Sent: Thursday, 15 November 2018 2:22 p.m.
To: 'Craig Wilson'; Nick Dallimore
Cc: William London
Subject: RE: Hemo gorge updated weight study

Thanks Craig – be great if that was doable

Monday 26th would work better for me, hope that suits others.
Cheers

Marc Spijkerbosch Community Arts Advisor
P: 07 351 8154 | E: marc.spijkerbosch@rotorualc.nz | W: rotorualakescouncil.nz

From: Craig Wilson [mailto:craigw@kilwell.co.nz]
Sent: Thursday, 15 November 2018 1:51 p.m.
To: Nick Dallimore
Cc: William London; Marc Spijkerbosch
Subject: RE: Hemo gorge updated weight study

Hi Nick,

Just wondering if you have heard of Beck Helicopters <http://www.heli.co.nz/lifting-and-construction/> for the lifting – they can do up to 1,820kgs which is more than the inner and very close to the outer of 1852.

For the sake of some Kgs we could look at attaching some of the final short tubes onsite to help save weight on the outer.

We have started out testing today and should have final results for tomorrow – is everyone ok for a meeting Monday 26th or Wednesday 28th of Nov?

Regards
Craig

From: Nick Dallimore <nick@tepuia.com>
Sent: Wednesday, 7 November 2018 7:13 AM
To: Craig Wilson <craigw@kilwell.co.nz>
Cc: William London <williaml@fibretube.co.nz>; Marc.Spijkerbosch (Marc.Spijkerbosch@rotorualc.nz) <Marc.Spijkerbosch@rotorualc.nz>
Subject: RE: Hemo gorge updated weight study

Yes I think so.

PLUS - Given the potential height of all the powerlines just outside your property I would also like us to consider Will's comment about potentially shipping the two Vortex's in half, with final assembly at the Te Puia car park. It might be two early to figure this logistic out yet??

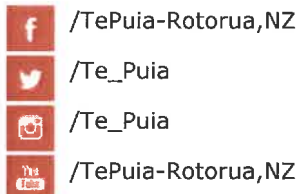
Nga mihi


Nick

Nick Dallimore

MANAGER – SPECIAL PROJECTS

D +64 7 343 1872
M +64 27 2011 536
E nick@tepuia.com
W www.tepuia.com



 HEMO ROAD, P.O. BOX 334, ROTORUA, 3040 NEW ZEALAND



From: Craig Wilson <craigw@kilwell.co.nz>
Sent: Tuesday, 6 November 2018 5:04 PM
To: Nick Dallimore <nick@tepuia.com>
Cc: William London <williaml@fibretube.co.nz>
Subject: FW: Hemo gorge updated weight study

Hi Nick,

Final (provisional) weights for sculpture attached – looks like it is still on the high side at 1850 for the outer and almost 1600 for the inner.

Looks like trucking will be the only option unfortunately.

Regards
Craig

From: James Ledingham <james.ledingham@gurit.com>
Sent: Tuesday, 6 November 2018 9:36 AM
To: Craig Wilson <craigw@kilwell.co.nz>
Cc: Tony Stanton <Tony.Stanton@gurit.com>
Subject: Hemo gorge updated weight study

Hi Craig,

I've updated the weight study for the hemo sculpture.

The main changes are:

- Base plates: these have been reduced to the minimum size (300x250x25 and 300x200x20 for each outer and inner tube respectively) as we discussed in the recent call with Graeme. This dropped 80-90kg off each base weight.
- Outer tube laminate weight: this has been updated based on the info I had from July based a full length tube weight I got from will (weight was excluding final carbon sock layer and without tip piece). This caused a slight increase in the outer tube laminate weight. It would be great to get more as built tube weights when available so we can confirm the weights are still tracking as expected.
- Manaia panels: I have removed this weight from the weight study. I assume that these will be hung in place after the sculpture has been installed on site.

There will likely be some updates to the overall weight over the coming months as the connection specification is confirmed from the testing results and the as built weights are reviewed. However I do not anticipate that these would change the weight significantly, so the transportation method can be based on the current weights.

At this stage I am going to issue the invoice for the contract Stage 5 – weight estimate (fixed price \$1200).

Thanks

James

Click [here](#) to report this email as spam.

From: Craig Wilson <craigw@kilwell.co.nz>
Sent: Thursday, 15 November 2018 9:19 p.m.
To: Nick Dallimore
Cc: William London; Marc Spijkerbosch
Subject: Re: Hemo gorge updated weight study

Hi,
Have his email via phone just now. He was fairly confident over the phone. But wanted to eyeball how the structure would look to see how it would lift. Although he is based in NP he is originally from Rotorua so knows the lay of the land, but would need to confirm flight path. Will copy you in with my email to him.
Cheers
Craig

From: Nick Dallimore <nick@tepuia.com>
Sent: Thursday, 15 November 2018 8:59:33 PM
To: Craig Wilson
Cc: William London; Marc.Spijkerbosch (Marc.Spijkerbosch@rotorualc.nz)
Subject: Re: Hemo gorge updated weight study

Definitely worth investigating. I have spoken with people from New Plymouth in the past.... but this looks promising!

Have you sent them any information yet?

Nga mihi

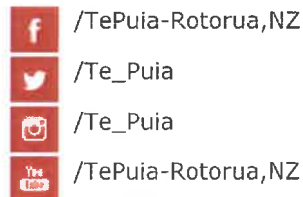
Nick

Sent from my iPad

Nick Dallimore

MANAGER – SPECIAL PROJECTS

D +64 7 343 1872
M +64 27 2011 536
E nick@tepuia.com
W www.tepuia.com



 HEMO ROAD, P.O. BOX 334, ROTORUA, 3040 NEW ZEALAND



On 15/11/2018, at 1:51 AM, Craig Wilson <craigw@kilwell.co.nz> wrote:

Hi Nick,

Just wondering if you have heard of Beck Helicopters <http://www.heli.co.nz/lifting-and-construction/> for the lifting – they can do up to 1,820kgs which is more than the inner and very close to the outer of 1852.

For the sake of some Kgs we could look at attaching some of the final short tubes onsite to help save weight on the outer.

We have started out testing today and should have final results for tomorrow – is everyone ok for a meeting Monday 26th or Wednesday 28th of Nov?

Regards
Craig

From: Nick Dallimore <nick@tepuia.com>
Sent: Wednesday, 7 November 2018 7:13 AM
To: Craig Wilson <craigw@kilwell.co.nz>
Cc: William London <williaml@fibretube.co.nz>; Marc.Spijkerbosch (Marc.Spijkerbosch@rotorualc.nz) <Marc.Spijkerbosch@rotorualc.nz>
Subject: RE: Hemo gorge updated weight study

Yes I think so.

PLUS - Given the potential height of all the powerlines just outside your property I would also like us to consider Will's comment about potentially shipping the two Vortex's in half, with final assembly at the Te Puia car park. It might be two early to figure this logistic out yet??

Nga mihi

Nick

Nick Dallimore

MANAGER – SPECIAL PROJECTS

D +64 7 343 1872		— /TePuia-Rotorua,NZ
M +64 27 2011 536		— /Te_Puia
E nick@tepuia.com		— /Te_Puia

From: Craig Wilson <craigw@kilwell.co.nz>
Sent: Tuesday, 6 November 2018 5:04 PM
To: Nick Dallimore <nick@tepuia.com>
Cc: William London <williaml@fibretube.co.nz>
Subject: FW: Hemo gorge updated weight study

Hi Nick,

Final (provisional) weights for sculpture attached – looks like it is still on the high side at 1850 for the outer and almost 1600 for the inner.

Looks like trucking will be the only option unfortunately.

Regards
Craig

From: James Ledingham <james.ledingham@gurit.com>
Sent: Tuesday, 6 November 2018 9:36 AM
To: Craig Wilson <craigw@kilwell.co.nz>
Cc: Tony Stanton <Tony.Stanton@gurit.com>
Subject: Hemo gorge updated weight study

Hi Craig,

I've updated the weight study for the hemo sculpture.

The main changes are:

- **Base plates:** these have been reduced to the minimum size (300x250x25 and 300x200x20 for each outer and inner tube respectively) as we discussed in the recent call with Graeme. This dropped 80-90kg off each base weight.
- **Outer tube laminate weight:** this has been updated based on the info I had from July based a full length tube weight I got from will (weight was excluding final carbon sock layer and without tip piece). This caused a slight increase in the outer tube laminate weight. It would be great to get more as built tube weights when available so we can confirm the weights are still tracking as expected.
- **Manaia panels:** I have removed this weight from the weight study. I assume that these will be hung in place after the sculpture has been installed on site.

There will likely be some updates to the overall weight over the coming months as the connection specification is confirmed from the testing results and the as built weights are reviewed. However I do not anticipate that these would change the weight significantly, so the transportation method can be based on the current weights.

At this stage I am going to issue the invoice for the contract Stage 5 – weight estimate (fixed price \$1200).

Thanks

James

From: Stewart Brown
Sent: Friday, 16 November 2018 2:27 p.m.
To: 'Craig Wilson'; nick@tepuia.com; Marc Spijkerbosch
Cc: William London
Subject: RE: Re lifting statues

Hi Craig

26th works for me

Stewart Brown Kaihautū Mahi Toi Arts & Culture Manager, OHU: MAHI TOI - Arts & Culture
Rotorua Lakes Council P: 07 351 7828 | E: stewart.brown@rotorualc.nz | W: www.rotorualakescouncil.nz



From: Craig Wilson [<mailto:craigw@kilwell.co.nz>]
Sent: Friday, 16 November 2018 2:23 p.m.
To: nick@tepuia.com; Marc Spijkerbosch; Stewart Brown
Cc: William London
Subject: FW: Re lifting statues

Hi All,

Got this back from Alan (@ Beck Helicopters) for the timing and pricing on the lift to site.

Looks like we can definitely get the inner half onto site (as its 1,577kg in weight) but outer might be just over at 1,852kg as their max is 1,820kg. I will talk with the guys and see if there is any way we could reduce the outer weight by putting some of the final cross pieces in place on site to help reduce the weight down – this should be possible as we are only looking to save 32kgs...

Price is higher than we had in the budget of \$5,000, so anything over this will increase the cost – but it must be a lot quicker and easier than the truck and crane option?

We can discuss at the next meeting on the 26th/28th. =

Regards
Craig

From: Alan Beck <alan@heli.co.nz>
Sent: Friday, 16 November 2018 1:27 PM
To: Craig Wilson <craigw@kilwell.co.nz>

Cc: David Beck <david@heli.co.nz>

Subject: Re lifting statues

Afternoon Craig,

Re your request, and our subsequent phone conversation regarding performing a lifting job for you, it looks like we can do this and still remain clear of built up areas around your factory at Owkata, however, we would need to shut the road off whilst we are placing the statue on the platform.

Re the weights, I understand the 1870 kg module can be broken down into 2 pieces. Is this correct, as our max weight is 1820 kgs.

We will attend to all the CAA related consents and flight paths, as well as have staff at each end to assist with the erection. If this was to go ahead, I will need to stop by to visually assess the Hazards and correlate to a workable plan. We would use one of our heavy lift Super Huey Iroquois helicopters for this job. Our costs for this are as below, and are related to an hourly rate to accomplish the mission.

- | | |
|---|-----------------------------|
| • Eltham – Rotorua 120nm @ 100 knots ferry speed | 1.2 hrs x 3600 |
| • Estimate to lift and place 3 x structures , allow | .5 “ “ |
| • Rotorua - Eltham return flight | <u>1.2 “ “</u> |
| | <u>2.9hrs x \$3600+ GST</u> |

So, slightly over \$10000 plus GST for budgeting purposes. We need to have a solid anchor point to lift from so that the main statue can hang vertically for placing over the bolts. The same for the wings.

Please let me know if you wish to further this , and I will pencil in a trip to my old home town to do the necessary inspection.

Nga mihi

Regards

Allan Beck QSM,
CEO/
Beck Helicopters Ltd,
Eltham, Taranaki,
New Zealand.
Past Chairman NZAAA, Councillor- Aviation NZ.

T: 06 764 7073
F: 06 764 7070
M: 0274 425 939
E: alan@heli.co.nz
W: www.heli.co.nz



GU6706 Hemo Gorge Sculpture - Weight Estimate

5/11/2018

Component (name)	Description	Weight (kg)
Outer Tube Laminate	Tubes inc. former. + taping between tubes	1333
Outer Chevrons	8mm Chevrons + 3Dprinted and wrapped blades + Bonding and taping, assuming 50% through tube style	235
Outer Art Panels	Not Included	0
Inner Tube Laminate	Tubes inc. former. + taping between tubes	1179
Inner Chevrons	8mm Chevrons + 3Dprinted and wrapped blades + Bonding and taping, assuming 50% through tube style	224
Inner Art Panels	Not Included	0
Outer Base Fittings	Base plates 300x250x25 per tube (12 off)	180
	300mm long Sched40 pipe spigots	84
Inner Base Fittings	Base plates 300x250x20 per tube (12 off)	115
	300mm long Sched40 pipe spigots	44
Outer Tube Paint	Clear coat & Nyalic UV resin coating	20
Inner Tube Paint	Clear coat & Nyalic UV resin coating	15
Outer Tube Assembly	Tubes + Chevrons + Art + Base fittings	1852
Inner Tube Assembly	Tubes + Chevrons + Art + Base fittings	1577
Total Sculpture		3429

Notes:

The above weights include a 15% margin on composite parts for material joins/overlaps and resin content variation

From: Marc Spijkerbosch
Sent: Wednesday, 16 January 2019 9:18 a.m.
To: 'Chris Farnsworth'
Subject: RE: Hemo Sculpture update meeting

Hi Chris
Hope you had a good break!
Just had a chat with Craig at Kilwell to get a sense of timings.
Currently on track for an April install.
Printing almost complete, assembly to start next week on the first helix. Both helix's should be completed end of March.
Helicopter install scenario – confirming this week.

Hope this all sounds ok. Will be great to see this thing finally pointing to the heavens.
Cheers
Marc

Marc Spijkerbosch Community Arts Advisor
P: 07 351 8154 | E: marc.spijkerbosch@rotorualc.nz | W: rotorualakescouncil.nz

From: Chris Farnsworth [<mailto:Chris.Farnsworth@nzta.govt.nz>]
Sent: Tuesday, 15 January 2019 10:47 a.m.
To: Marc Spijkerbosch
Subject: RE: Hemo Sculpture update meeting

Hi Marc
Happy NYs to you.
What's the latest on the sculpture plans – is it mostly built and do we have an install month yet?
Cheers,

Chris Farnsworth / Senior Project Manager
System Design and Delivery - Bay of Plenty
DDI 64 7 927 6017 / M 64 21 612 136
E chris.farnsworth@nzta.govt.nz / W nzta.govt.nz

From: Marc Spijkerbosch <Marc.Spijkerbosch@rotorualc.nz>
Sent: Monday, 27 August 2018 9:25 AM
To: Chris Farnsworth <Chris.Farnsworth@nzta.govt.nz>
Subject: Hemo Sculpture update meeting

Morning Chris
Not sure if you are over these ways on Friday, but we're having a monthly catch up at Kilwell 10.30am.
You would be most welcomed to come along and share anything from NZTA's perspective.
Fabricators, engineers, Opus etc planning to be around the table.

Hope that works – let me know
Cheers
Marc

Marc Spijkerbosch *Community Arts Advisor*

P: 07 351 8154

E: marc.spijkerbosch@rotorualc.nz | W: rotorualakescouncil.nz

A: 1061 Haupapa St, Private Bag 3029, Rotorua Mail Centre, Rotorua 3046, New Zealand

ROTORUA
LAKES COUNCIL

This message has been scanned for malware by Websense. www.websense.com

Find the latest transport news, information, and advice on our website:

www.nzta.govt.nz

This email is only intended to be read by the named recipient. It may contain information which is confidential, proprietary or the subject of legal privilege. If you are not the intended recipient you must delete this email and may not use any information contained in it. Legal privilege is not waived because you have read this email.

Click [here](#) to report this email as spam.

From: Marc Spijkerbosch
Sent: Tuesday, 29 January 2019 9:22 a.m.
To: 'Craig Wilson'; Shilton, Fred
Cc: Chris Farnsworth; Nick Dallimore
Subject: RE: Hemo Plinth Bolt checkup

Thanks Craig
Would be keen to pop along for a look. See you then.
Cheers
Marc

Marc Spijkerbosch Community Arts Advisor
P: 07 351 8154 | E: marc.spijkerbosch@rotorualc.nz | W: rotorualakescouncil.nz

From: Craig Wilson [<mailto:craigw@kilwell.co.nz>]
Sent: Saturday, 26 January 2019 9:30 p.m.
To: Marc Spijkerbosch; Shilton, Fred
Cc: Chris Farnsworth; Nick Dallimore
Subject: Hemo Plinth Bolt checkup

Hi All,

Just to let you know Tony from Protech stainless in Hamilton will be over on Wednesday morning at 8am with a template of the inner and out helix rings. We plan is to take the lid off the plinth and check that everything fits and then replace it - should not take long. But its something we want to double check before we go to make the final ring and go to chopper in he sculpture.

Let me know if there is any problems - anyone else is welcome to come and inspect.

Regards
Craig

Click [here](#) to report this email as spam.

From: Craig Wilson <craigw@kilwell.co.nz>
Sent: Wednesday, 30 January 2019 5:22 p.m.
To: Shilton, Fred; Marc Spijkerbosch
Cc: Chris Farnsworth; Nick Dallimore
Subject: RE: Hemo Plinth Bolt check-up

Hi Fred,

Yes pretty much so – a couple of them appear to have been bent a bit out of alignment – but we are pretty sure we can use a rubber mallet to move them back. We only checked a 1/3 of the bolt placements as it was a much bigger job taking off the plinth cover than expected. A lot more screws and by 9am we were baking in the heat!

So we are going to go back at a later date and check the entire area. The bolts all need their protective cover removed (a glad wrap/masking tape/concrete splatter cover which I assume was put on during the concreting phase) and the plinth needs cleaning up as there is a bit of excess concrete splatter that will interfere with the rings when trying to level them off during the install.

We were planning on making some changes to the base plate around widening and count sinking the bolt holes to make the lowering on of the ring easier – especially when there are 48 on each ring to line up. We will also put a pointed plastic sheath over the bolts to protect them and help guide them into through the holes when its dropped into place.

Will let you know when we go back to have another look and clean up the plinth – but will wait for a cooler day to be sure.

Regards
Craig

From: Shilton, Fred <fred.shilton@wsp-opus.co.nz>
Sent: Wednesday, 30 January 2019 3:12 PM
To: Craig Wilson <craigw@kilwell.co.nz>; Marc Stijkenbosch <marc.spijkerbosch@rotorualc.nz>
Cc: Chris Farnsworth <Chris.Farnsworth@nzta.govt.nz>; Nick Dallimore <nick@tepuia.com>
Subject: RE: Hemo Plinth Bolt checkup

How did the bolt check go, does it all line up still?



Fred Shilton

Work Group Manager Transportation | Project Director

WSP Opus, 1465 Arawa St, Rotorua 3010, New Zealand
PO Box 1246, Rotorua 3040, New Zealand

+64 7 343 1405 +64 27 499 9356 Fred.Shilton@wsp-opus.co.nz



www.wsp-opus.co.nz

From: Craig Wilson [<mailto:craigw@kilwell.co.nz>]

Sent: Saturday, 26 January 2019 9:30 p.m.

To: Marc Stijkenbosch <marc.spijkerbosch@rotorualc.nz>; Shilton, Fred <fred.shilton@wsp.com>

Cc: Chris Farnsworth <Chris.Farnsworth@nzta.govt.nz>; Nick Dallimore <nick@tepuia.com>

Subject: Hemo Plinth Bolt checkup

Hi All,

Just to let you know Tony from Protech stainless in Hamilton will be over on Wednesday morning at 8am with a template of the inner and out helix rings. We plan is to take the lid off the plinth and check that everything fits and then replace it - should not take long. But its something we want to double check before we go to make the final ring and go to chopper in he sculpture.

Let me know if there is any problems - anyone else is welcome to come and inspect.

Regards

Craig

NOTICE: This communication and any attachments ("this message") may contain information which is privileged, confidential, proprietary or otherwise subject to restricted disclosure under applicable law. This message is for the sole use of the intended recipient(s). Any unauthorized use, disclosure, viewing, copying, alteration, dissemination or distribution of, or reliance on, this message is strictly prohibited. If you have received this message in error, or you are not an authorized or intended recipient, please notify the sender immediately by replying to this message, delete this message and all copies from your e-mail system and destroy any printed copies.

Click [here](#) to report this email as spam.

From: Craig Wilson <craigw@kilwell.co.nz>
Sent: Thursday, 31 January 2019 5:26 p.m.
To: Marc Spijkerbosch; Nick Dallimore (nick@tepuia.com); Stewart Brown
Cc: Craig Tiriana; Henry Weston
Subject: Hemo Update
Attachments: Hemo Sculpture Update @ 31-Jan-19.pptx

Hi All,

Thanks for coming out today and apologies for the final slides on the attached.

I have attached my presentation in case you need it for any further internal discussions. If you need anything else – in regards further tours and details on the breakdowns of the costs then let me know.

I will continue to work up a breakdown on what each contributing factor has caused of the total overspend – design issues & delays, change in Importance levels , finalisation of estimated costs shortly etc.

From our end we will need to know where everyone stands within the next 2 weeks before we begin assembly if possible.

Regards

Craig Wilson (BMS, CA)

Chief Executive | Kilwell Sports Group

P: +64 (0)7 345 9094 Extn 832 M: +64 (0)21 2331190 or F: +64 (0)7 345 5149

Email: Craigw@kilwell.co.nz | Web www.kilwell.co.nz or www.kilwellfibretube.co.nz

490 Te Ngae Road, Rotorua 3010, Private Bag 3033, Rotorua 3046, New Zealand



Winner

**Westpac Rotorua
Business Excellence
Awards 2018**

Ngāhā Kōwhiri Whānau: Kōwhiri Whānau Whānau

ROTORUA

KILWELL Where Adventures Begin

 [Like us on Facebook](#)

Please consider the environment before printing this e-mail

The information in this email is confidential. It is intended solely for the addressee, access to this email by anyone else is unauthorised. If you are not the intended recipient, any disclosure, copying, distribution or any action taken or omitted to be taken in reliance on it is prohibited.

From: Marc Spijkerbosch <Marc.Spijkerbosch@rotorualc.nz>

Sent: Thursday, 31 January 2019 8:56 AM

To: Nick Dallimore (nick@tepuia.com) <nick@tepuia.com>; Craig Wilson <craigw@kilwell.co.nz>

Subject: Extra attendees this arvo

Morena Nick, Craig

Just learned that Henry Weston (COO) and Craig Tiriana (acting CEO) might be joining us this afternoon. Not a biggie, but Stewart suggesting I pass on.

See you later on
Cheers
Marc

Marc Spijkerbosch *Community Arts Advisor*

P: 07 351 8154

E: marc.spijkerbosch@rotorualc.nz | W: rotorualakescouncil.nz

A: 1061 Haupapa St, Private Bag 3029, Rotorua Mail Centre, Rotorua 3046, New Zealand

ROTORUA
LAKES COUNCIL

This message has been scanned for malware by Websense. www.websense.com

Click [here](#) to report this email as spam.

Hemo Sculpture

Update Meeting

Jan 2019

Agenda

1. Manufacturing Progress
 - i. Tubes production
 - ii. Plinth and rings
 - iii. Assembly
 - iv. Installation
2. Installation
3. Timetable
4. Cost vs Budget
5. Media Plan
6. Other

Manufacturing Progress

- 3D printing of tubes to finish end of next week
 - 2 outer tubes (14 & 15) – 9 & 11 pieces each.
 - New out tips week after next.
 - Then final Then chevrons to complete (approx. 2 weeks work).
 - Currently 168 of 486 (35%) done.
 - Plate is all made – but needs to be cut & CNC'd.
 - Can print 40 per day(2hrs each) and manufacture 14/day – so progress is fast on these.
- Inner tube set is all finished.
- Outer tube set is 93% printed and 82% manufactured.
- Testing to still ongoing – next week is tube to tube and base testing.

Manufacturing Progress (Cont)

- Protech to have final rings drilled end of next week.
- Templates partly checked to plinth yesterday – some work to be done there to clean up site and straighten bolts.
- Option for them to help with levelling on install.
- Testing
 - Tube to tube being made now
 - Finalisation of design & qty has been difficult.
 - This will finalise the laminate for joining tubes – needed for assembly
 - We are recycling tubes and reducing qty to help save costs.

Installation

- Alan Beck from Beck Helicopters Ltd can do the job.
- Using Super Huey – max lift 1,820Kg
- Inner = 1,540kg & Outer = 1,760kg – need 50kg form clearance due to precision drop.
- Scaffolding erected against building – refer diagram.
- Alan is working up flight plan and safety plan currently.
- Flight will go from Kilwell out to lake, up to airport and across to hills and then out and around into Hemo.
- Temp stop in carpark, reset, remove sail and then drop into place.
- Refuel and then repeat with inner. (need reserved area for landing & refuel)
- Drop onto 4x2 and then pull out once centred on bolts.
- Base plate to be cut with extra 10mm bolt counter sunk hole clearance to allow ease of locating.
- Each bolt to have plastic pointed covers to protect threads.

Timetable

- Base rings arrive Feb-8th
- Finish printing tubes by Feb-15th (with 2 weeks for chevrons)
- Start assembly Feb-11th
- Scaffolding installed Feb-22nd
- Inner finished Apr-30th
- Outer finished May-10th
- Installation Sunday May 19th or 26th?

Budget vs Costs

	Total Budget	YTD Actual Spend	Estimated Spend to Go	Total Estimate	Over Spend
Materials	\$68,922	\$129,590	\$25,000	\$154,590	(\$85,668)
Testing & Certification	\$16,600	\$50,328	\$12,210	\$62,538	(\$45,938)
Scaffolding	\$6,250	\$0	\$16,000	\$16,000	(\$9,750)
Transport	\$6,400	\$0	\$15,000	\$15,000	(\$8,600)
Wages	\$247,108	\$200,721	\$73,675	\$274,396	(\$27,288)
Others	\$25,936	\$0	\$53,054	\$53,054	(\$27,118)
	\$371,216	\$380,638	\$194,939	\$575,577	(\$204,361)

- Materials have been driven by extra layers – especially in relation to resin & consumables.
- Testing & Certification is by extra testing, rechecking of design and cutting up into 3D files the inner helix.
- Scaffolding is due to 2 structures instead of 1 – and extra time up (12 weeks)
- Transport is now confirmed by chopper – no allowance for NZTA?
- Wages is due to extension of time – offset by 3D printing savings and buffer!
- Other is Mania plates (TBC) and base plates which has been driven by materials 26mm 316 stainless.

From: Craig Wilson <craigw@kilwell.co.nz>
Sent: Tuesday, 5 February 2019 12:09 p.m.
To: Craig Tiriana
Subject: RE: Confidential request

Hi Craig,

Yes he has been in touch. Just talked to him.

Not good below – and not all correct.

Regards
Craig

From: Craig Tiriana <Craig.Tiriana@rotorualc.nz>
Sent: Tuesday, 5 February 2019 11:38 AM
To: Craig Wilson <craigw@kilwell.co.nz>
Subject: Confidential request

Morning Craig,

Henry is trying to contact you re a urgent meeting re the below which was posted on social media last night.

https://m.facebook.com/story.php?story_fbid=1251760024981714&id=436732829817775

HEMO SCULPTURE BLOWOUT ENDANGERS BUSINESS

Three triangulating accounts suggest that senior Council officials are trying to compress unanticipated costs with a local company trying to do the right thing, to hide incompetent contracting and project management around the Hemo sculpture.

The inevitable result is rising but unknown cost to ratepayers, with no completion date yet in sight, reigniting questions about vanity and legacy projects by a Council that plans to borrow another \$20 million each year for the next five years.

Recall the unchecked enthusiasm of the Mayor's power bloc when the design model was launched at Council? The adolescent cries of sycophantic support were sickening.

A minority of unheeded voices quietly asked why, how much, did we have the money for it, how can Te Puia's brilliant wood carvers cast the sculpture in bronze, and how could the design be original when it copied the iconic Olympic flame.

Not a brilliant start, but nevertheless, the project started with a foundation being laid to carry a 20 tonne load and a notional \$500,000 budget. Tragically, the business case and budget were never put in the public domain to invite corrections.

Then, recall, Canadians were engaged to build it in stainless steel, that is, until public controversy erupted over Council not using a New Zealand contractor.

At this point, in essence, Killwells of Rotorua offered to save the Council's bacon by using 3D printing technology and carbon fibre. The innovation was estimated to reduce the sculpture's weight to less than one tonne. The project restarted.

Council then changed the design specifications, using Scion's independent estimates, to raise the wind load tolerances from 140 to 180 kph. And pressed ahead with building a gross visual distraction in addition to the health and safety risks already posed by the tight roundabout with reverse camber.

The dilemma for Council now is that they want the sculpture to be finished and installed well before the October 2019 election, with enough time to kill it as an election issue around waste with booster narrative.

At the same time a senior official has been tasked to compress the estimated blowout of at least \$200,000 in a context of embarrassingly profligate spending. As anyone who has run a manufacturing business knows, increasing production speed raises costs.

But it is all too late. The Hemo sculpture has already come to symbolize a combination of irresponsible governance, weak design, and bungling project and financial management. Much like Mudtopia but with the added disadvantage of putting one of Rotorua's most innovative companies under the hammer. Dumb.

In future, local firms would be well advised not to enter into rubbery contracts with Council for vanity and legacy monuments, unless it changes.

Reynold Macpherson
Rotorua

Cheers

Craig

Craig Tiriana Kaihautū – Ohu Toihautū | Manager, Chief Executive's Office
07 348 4199 | 027 838 9961 | craig.tiriana@rotorualc.nz | rotorualakescouncil.nz

From: Craig Wilson [<mailto:craigw@kilwell.co.nz>]
Sent: Thursday, 31 January 2019 5:26 p.m.
To: Marc Spijkerbosch; Nick Dallimore (nick@tepuia.com); Stewart Brown
Cc: Craig Tiriana; Henry Weston
Subject: Hemo Update

Hi All,

Thanks for coming out today and apologies for the final slides on the attached.

I have attached my presentation in case you need it for any further internal discussions. If you need anything else – in regards further tours and details on the breakdowns of the costs then let me know.

I will continue to work up a breakdown on what each contributing factor has caused of the total overspend – design issues & delays, change in Importance levels, finalisation of estimated costs shortly etc.

From our end we will need to know where everyone stands within the next 2 weeks before we begin assembly if possible.

Regards

Craig Wilson (BMS, CA)
Chief Executive | Kilwell Sports Group
P: +64 (0)7 345 9094 Extn 832 **M:** +64 (0)21 2331190 or **F:** +64 (0)7 345 5149
Email: Craigw@kilwell.co.nz | **Web** www.kilwell.co.nz or www.kilwellfibretube.co.nz
490 Te Ngae Road, Rotorua 3010, Private Bag 3033, Rotorua 3046, New Zealand



Winner

Westpac Rotorua
Business Excellence
Awards 2018

Ngā Whānau o Te Whānau o Aotearoa



KILWELL

Where Adventures Begin



Like us on Facebook

Please consider the environment before printing this e-mail

The information in this email is confidential. It is intended solely for the addressee, access to this email by anyone else is unauthorised. If you are not the intended recipient, any disclosure, copying, distribution or any action taken or omitted to be taken in reliance on it is prohibited.

From: Marc Spijkerbosch <Marc.Spijkerbosch@rotorualc.nz>

Sent: Thursday, 31 January 2019 8:56 AM

To: Nick Dallimore (nick@tepuia.com) <nick@tepuia.com>; Craig Wilson <craigw@kilwell.co.nz>

Subject: Extra attendees this arvo

Morena Nick, Craig

Just learned that Henry Weston (COO) and Craig Tiriana (acting CEO) might be joining us this afternoon. Not a biggie, but Stewart suggesting I pass on.

See you later on

Cheers

Marc

Marc Spijkerbosch *Community Arts Advisor*

P: 07 351 8154

E: marc.spijkerbosch@rotorualc.nz | W: rotorualakescouncil.nz

A: 1061 Haupapa St, Private Bag 3029, Rotorua Mail Centre, Rotorua 3046, New Zealand

ROTORUA
LAKES COUNCIL

This message has been scanned for malware by Websense. www.websense.com

Click [here](#) to report this email as spam.

From: Craig Tiriana
Sent: Tuesday, 5 February 2019 11:01 p.m.
To: Craig Wilson; Craig Tiriana; Henry Weston
Subject: Re: Hemo Update

Thanks Craig.
Well let you know meeting progress and time to appear so to speak.
Enjoy the mid week break
Craig

Sent from my Samsung Galaxy smartphone.

----- Original message -----

From: Craig Wilson <craigw@kilwell.co.nz>
Date: 5/02/19 6:33 PM (GMT+12:00)
To: Craig Tiriana <Craig.Tiriana@rotorualc.nz>, Henry Weston <Henry.Weston@rotorualc.nz>
Subject: RE: Hemo Update

Hi Craig & Henry,

Draft letter from us that we would look to put out there if required – let me know your thoughts.

I have talked to Julian, the CEO at Scion and updated on what has happened. He is aware of their part in this (ie testing only). Don't think he will take it any further.

Let me know a time if you require me on Thursday.

Enjoy your Waitangi Day!

Regards

Craig Wilson (BMS, CA)

Chief Executive | Kilwell Sports Group

P: +64 (0)7 345 9094 Extn 832 M: +64 (0)21 2331190 or F: +64 (0)7 345 5149

Email: Craigw@kilwell.co.nz | Web www.kilwell.co.nz or www.kilwellfibretube.co.nz

490 Te Ngae Road, Rotorua 3010, Private Bag 3033, Rotorua 3046, New Zealand



Winner

**Westpac Rotorua
Business Excellence
Awards 2018**

Ngāhū Kaitiaki Māori | Ngāhū Kaitiaki Māori



 Like us on Facebook

Please consider the environment before printing this e-mail

The information in this email is confidential. It is intended solely for the addressee, access to this email by anyone else is unauthorised.
If you are not the intended recipient, any disclosure, copying, distribution or any action taken or omitted to be taken in reliance on it is prohibited.

From: Craig Wilson
Sent: Thursday, 31 January 2019 5:26 PM
To: Marc Spijkerbosch <Marc.Spijkerbosch@rotorualc.nz>; Nick Dallimore (nick@tepuia.com) <nick@tepuia.com>; Stewart Brown <Stewart.Brown@rotorualc.nz>
Cc: Craig.Tiriana@rotorualc.nz; Henry.Weston@rotorualc.nz
Subject: Hemo Update

Hi All,

Thanks for coming out today and apologies for the final slides on the attached.

I have attached my presentation in case you need it for any further internal discussions. If you need anything else – in regards further tours and details on the breakdowns of the costs then let me know.

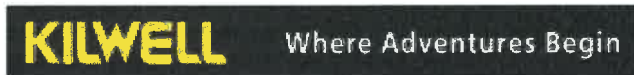
I will continue to work up a breakdown on what each contributing factor has caused of the total overspend – design issues & delays, change in Importance levels , finalisation of estimated costs shortly etc.

From our end we will need to know where everyone stands within the next 2 weeks before we begin assembly if possible.

Regards

Craig Wilson (BMS, CA)
Chief Executive | Kilwell Sports Group

P: +64 (0)7 345 9094 Extn 832 M: +64 (0)21 2331190 or F: +64 (0)7 345 5149
Email. Craigw@kilwell.co.nz | **Web** www.kilwell.co.nz or www.kilwellfibretube.co.nz
490 Te Ngae Road, Rotorua 3010, Private Bag 3033, Rotorua 3046, New Zealand



[Please consider the environment before printing this e-mail](#)

The information in this email is confidential. It is intended solely for the addressee, access to this email by anyone else is unauthorised. If you are not the intended recipient, any disclosure, copying, distribution or any action taken or omitted to be taken in reliance on it is prohibited.

From: Marc Spijkerbosch <Marc.Spijkerbosch@rotorualc.nz>
Sent: Thursday, 31 January 2019 8:56 AM
To: Nick Dallimore (nick@tepuia.com) <nick@tepuia.com>; Craig Wilson <craigw@kilwell.co.nz>
Subject: Extra attendees this arvo

Morena Nick, Craig

Just learned that Henry Weston (COO) and Craig Tiriana (acting CEO) might be joining us this afternoon.
Not a biggie, but Stewart suggesting I pass on.

See you later on
Cheers
Marc

Marc Spijkerbosch *Community Arts Advisor*

P: 07 351 8154

E: marc.spijkerbosch@rotorualc.nz | W: rotorualakescouncil.nz

A: 1061 Haupapa St, Private Bag 3029, Rotorua Mail Centre, Rotorua 3046, New Zealand

ROTORUA
LAKES COUNCIL

This message has been scanned for malware by Websense. www.websense.com

Click [here](#) to report this email as spam.

Craig Wilson – CEO
Kilwell Fibretube
07 3459094
craigw@kilwell.co.nz



5 February 2019

Hemo Sculpture Project

Press Statement - For Immediate Release

Kilwell Fibretube have been made aware of some comments posted on Facebook on February 4th. Kilwell wish to advise that we have not been involved in the preparation and distribution of the information in that post and that some of the post is factually incorrect.

We can confirm that there has been an increase in the forecasted budget for this project. This has primarily been driven by an increase in the certification requirement which is mandatory for any structure or building that is erected in the public domain.

In this case the Importance Level of the building was increased which meant that the sculpture is now required to withstand 175 km/h winds instead of the original 135 km/hr. This change happened after we were approximately 6 months into the construction phase. The increase required changes to the design, material laminate and increased testing to what was originally proposed. These changes then had to be re-tested and re-certified.

It is important to know the Rotorua Lakes Council or Scion are not responsible for any changes to the design specifications. Scion has only been involved with the testing of some components required for certification. The changes to the design have been driven by qualified engineers that have been contracted to certify the structure by NZTA due to its location within a national road roundabout.

Kilwell Fibretube originally provided a quote to the RLC based on known costs at the time based on the original certification levels required. Some of the costs at that stage were unknown and were yet to be determined and therefore estimates were used that were to be finalised once the design and certification was completed.

Kilwell Fibretube wish to make clear, the Rotorua Lakes Council has not put any undue influence on us or put us in a position we are not comfortable with. All parties have been very patient in this ground breaking project and are working closely together to reach a resolution.

End

From: Craig Tiriana
Sent: Wednesday, 6 February 2019 10:52 a.m.
To: Craig Wilson; Craig Tiriana; Henry Weston; Geoff Williams; Ingrid Tiriana
Subject: Re: Hemo Update

Fyi we have received a media enquiry re this project progress/timeline and costs this morning. Daily Post are after something by Thursday lunchtime.
Henry I will get our team to look at today/overnight with a view of having something to you to consider tomorrow to meet their deadline.
Craig I think your draft is pretty good and will be needed as part of the response.
Happy Waitangi Day!
Craig

Sent from my Samsung Galaxy smartphone.

----- Original message -----

From: Craig Wilson <craigw@kilwell.co.nz>
Date: 5/02/19 6:33 PM (GMT+12:00)
To: Craig Tiriana <Craig.Tiriana@rotorualc.nz>, Henry Weston <Henry.Weston@rotorualc.nz>
Subject: RE: Hemo Update

Hi Craig & Henry,

Draft letter from us that we would look to put out there if required – let me know your thoughts.

I have talked to Julian, the CEO at Scion and updated on what has happened. He is aware of their part in this (ie testing only). Don't think he will take it any further.

Let me know a time if you require me on Thursday.

Enjoy your Waitangi Day!

Regards

Craig Wilson (BMS, CA)

Chief Executive | Kilwell Sports Group

P: +64 (0)7 345 9094 Extn 832 **M:** +64 (0)21 2331190 or **F:** +64 (0)7 345 5149

Email: Craigw@kilwell.co.nz | **Web** www.kilwell.co.nz or www.kilwellfibretube.co.nz

490 Te Ngae Road, Rotorua 3010, Private Bag 3033, Rotorua 3046, New Zealand

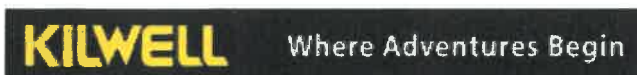


Winner

**Westpac Rotorua
Business Excellence
Awards 2018**

Aiāwhiri Waitangi Business Westpac Group

BY CHAMPIONS OF COMMUNITY
ROTORUA



 [Like us on Facebook](#)

Please consider the environment before printing this e-mail

The information in this email is confidential. It is intended solely for the addressee, access to this email by anyone else is unauthorised. If you are not the intended recipient, any disclosure, copying, distribution or any action taken or omitted to be taken in reliance on it is prohibited.

From: Craig Wilson
Sent: Thursday, 31 January 2019 5:26 PM
To: Marc Spijkerbosch <Marc.Spijkerbosch@rotorualc.nz>; Nick Dallimore (nick@tepuia.com) <nick@tepuia.com>; Stewart Brown <Stewart.Brown@rotorualc.nz>
Cc: Craig.Tiriana@rotorualc.nz; Henry.Weston@rotorualc.nz
Subject: Hemo Update

Hi All,

Thanks for coming out today and apologies for the final slides on the attached.

I have attached my presentation in case you need it for any further internal discussions. If you need anything else – in regards further tours and details on the breakdowns of the costs then let me know.

I will continue to work up a breakdown on what each contributing factor has caused of the total overspend – design issues & delays, change in Importance levels , finalisation of estimated costs shortly etc.

From our end we will need to know where everyone stands within the next 2 weeks before we begin assembly if possible.

Regards

Craig Wilson (BMS, CA)

Chief Executive | Kilwell Sports Group

P: +64 (0)7 345 9094 Extn 832 M: +64 (0)21 2331190 or F: +64 (0)7 345 5149

Email. Craigw@kilwell.co.nz | Web www.kilwell.co.nz or www.kilwellfibretube.co.nz

490 Te Ngae Road, Rotorua 3010, Private Bag 3033, Rotorua 3046, New Zealand



Please consider the environment before printing this e-mail

The information in this email is confidential. It is intended solely for the addressee, access to this email by anyone else is unauthorised. If you are not the intended recipient, any disclosure, copying, distribution or any action taken or omitted to be taken in reliance on it is prohibited.

From: Marc Spijkerbosch <Marc.Spijkerbosch@rotorualc.nz>
Sent: Thursday, 31 January 2019 8:56 AM
To: Nick Dallimore (nick@tepuia.com) <nick@tepuia.com>; Craig Wilson <craigw@kilwell.co.nz>
Subject: Extra attendees this arvo

Morena Nick, Craig

Just learned that Henry Weston (COO) and Craig Tiriana (acting CEO) might be joining us this afternoon.
Not a biggie, but Stewart suggesting I pass on.

See you later on

Cheers

Marc

Marc Spijkerbosch *Community Arts Advisor*

P: 07 351 8154

E: marc.spijkerbosch@rotorualc.nz | W: rotorualakescouncil.nz

A: 1061 Haupapa St, Private Bag 3029, Rotorua Mail Centre, Rotorua 3046, New Zealand

ROTORUA
LAKES COUNCIL

This message has been scanned for malware by Websense. www.websense.com

Click [here](#) to report this email as spam.

From: Craig Wilson <craigw@kilwell.co.nz>
Sent: Thursday, 7 February 2019 10:40 a.m.
To: Craig Tiriana
Subject: RE: Hemo Update

Hi Craig,

Will send through presentation shortly.

No problems with your changes - reads a lot better with your amendments.

Regards
Craig

-----Original Message-----

From: Craig Tiriana <Craig.Tiriana@rotorualc.nz>
Sent: Thursday, 7 February 2019 9:42 AM
To: Craig Wilson <craigw@kilwell.co.nz>
Subject: RE: Hemo Update

Morning Craig,

I'll keep you informed of how we are going for timing here. Can you email presentation through so we can get loaded ahead of item. Not urgent but before you head this way.

Also, attached are some suggested edits for your statement. We can discuss further later today.

Cheers
Craig

-----Original Message-----

From: Craig Wilson <craigw@kilwell.co.nz>
Sent: Thursday, 7 February 2019 8:24 AM
To: Craig Tiriana <Craig.Tiriana@rotorualc.nz>; Henry Weston <Henry.Weston@rotorualc.nz>; Geoff Williams <Geoff.Williams@rotorualc.nz>; Ingrid Tiriana <Ingrid.Tiriana@rotorualc.nz>
Subject: RE: Hemo Update

Hi Craig,

Understood - working up a presentation with slides to show council if/when needed as well.

Regards
Craig

-----Original Message-----

From: Craig Tiriana <Craig.Tiriana@rotorualc.nz>
Sent: Wednesday, 6 February 2019 10:52 AM
To: Craig Wilson <craigw@kilwell.co.nz>; Craig Tiriana <Craig.Tiriana@rotorualc.nz>; Henry Weston <Henry.Weston@rotorualc.nz>; Geoff Williams <Geoff.Williams@rotorualc.nz>; Ingrid Tiriana <Ingrid.Tiriana@rotorualc.nz>
Subject: Re: Hemo Update

Fyi we have received a media enquiry re this project progress/timeline and costs this morning. Daily Post are after something by Thursday lunchtime. Henry I will get our team to look at today/overnight with a view of having something to you to consider tomorrow to meet their deadline. Craig I think your draft is pretty good and will be needed as part of the response. Happy Waitangi Day!
Craig

Sent from my Samsung Galaxy smartphone.

----- Original message -----

From: Craig Wilson <craigw@kilwell.co.nz>
Date: 5/02/19 6:33 PM (GMT+12:00)
To: Craig Tiriana <Craig.Tiriana@rotorualc.nz>, Henry Weston <Henry.Weston@rotorualc.nz>
Subject: RE: Hemo Update

Hi Craig & Henry,

Draft letter from us that we would look to put out there if required - let me know your thoughts.

I have talked to Julian, the CEO at Scion and updated on what has happened. He is aware of their part in this (ie testing only). Don't think he will take it any further.

Let me know a time if you require me on Thursday.

Enjoy your Waitangi Day!

Regards

Craig Wilson (BMS, CA)
Chief Executive | Kilwell Sports Group
P: +64 (0)7 345 9094 Extn 832 M: +64 (0)21 2331190 or F: +64 (0)7 345 5149 Email.
Craigw@kilwell.co.nz<mailto:Craigw@kilwell.co.nz> | Web www.kilwell.co.nz<http://www.kilwell.co.nz/> or
www.kilwellfibretube.co.nz
490 Te Ngae Road, Rotorua 3010, Private Bag 3033, Rotorua 3046, New Zealand
[cid:image002.jpg@01CC4C45.7E18A320]<http://www.kilwell.co.nz/> [2018_WRBEA_Winner_Logo 25%]
[cid:image001.jpg@01CC4C45.7E18A320]<http://www.facebook.com/KilwellSports> Like us on
Facebook<http://www.facebook.com/KilwellSports>

Please consider the environment before printing this e-mail The information in this email is confidential. It is intended solely for the addressee, access to this email by anyone else is unauthorised. If you are not the intended recipient, any disclosure, copying, distribution or any action taken or omitted to be taken in reliance on it is prohibited.

From: Craig Wilson
Sent: Thursday, 31 January 2019 5:26 PM
To: Marc Spijkerbosch <Marc.Spijkerbosch@rotorualc.nz>; Nick Dallimore (nick@tepuia.com) <nick@tepuia.com>; Stewart Brown <Stewart.Brown@rotorualc.nz>
Cc: Craig.Tiriana@rotorualc.nz; Henry.Weston@rotorualc.nz
Subject: Hemo Update

Hi All,

Thanks for coming out today and apologies for the final slides on the attached.

I have attached my presentation in case you need it for any further internal discussions. If you need anything else - in regards further tours and details on the breakdowns of the costs then let me know.

I will continue to work up a breakdown on what each contributing factor has caused of the total overspend - design issues & delays, change in Importance levels , finalisation of estimated costs shortly etc.

From our end we will need to know where everyone stands within the next 2 weeks before we begin assembly if possible.

Regards

Craig Wilson (BMS, CA)
Chief Executive | Kilwell Sports Group
P: +64 (0)7 345 9094 Extn 832 M: +64 (0)21 2331190 or F: +64 (0)7 345 5149 Email.
Craigw@kilwell.co.nz<mailto:Craigw@kilwell.co.nz> | Web www.kilwell.co.nz<http://www.kilwell.co.nz/> or
www.kilwellfibretube.co.nz
490 Te Ngae Road, Rotorua 3010, Private Bag 3033, Rotorua 3046, New Zealand
[cid:image002.jpg@01CC4C45.7E18A320]<http://www.kilwell.co.nz/> [2018_WRBEA_Winner_Logo 25%]
[cid:image001.jpg@01CC4C45.7E18A320]<http://www.facebook.com/KilwellSports> Like us on
Facebook<http://www.facebook.com/KilwellSports>

Please consider the environment before printing this e-mail The information in this email is confidential. It is intended solely for the addressee, access to this email by anyone else is unauthorised.
If you are not the intended recipient, any disclosure, copying, distribution or any action taken or omitted to be taken in reliance on it is prohibited.

From: Marc Spijkerbosch <Marc.Spijkerbosch@rotorualc.nz<mailto:Marc.Spijkerbosch@rotorualc.nz>>
Sent: Thursday, 31 January 2019 8:56 AM
To: Nick Dallimore (nick@tepuia.com<mailto:nick@tepuia.com>) <nick@tepuia.com<mailto:nick@tepuia.com>>; Craig Wilson <craigw@kilwell.co.nz<mailto:craigw@kilwell.co.nz>>
Subject: Extra attendees this arvo

Morena Nick, Craig

Just learned that Henry Weston (COO) and Craig Tiriana (acting CEO) might be joining us this afternoon.
Not a biggie, but Stewart suggesting I pass on.

See you later on
Cheers

Marc

Marc Spijkerbosch Community Arts Advisor

P: 07 351 8154<tel:+6473518154>

E: marc.spijkerbosch@rotorualc.nz<mailto:marc.spijkerbosch@rotorualc.nz> | W:
rotorualakescouncil.nz<http://rotorualakescouncil.nz/?utm_source=Stationery&utm_medium=Email&utm_content=Ma
rc%2BSpijkerbosch&utm_campaign=Stationery>

A: 1061 Haupapa St, Private Bag 3029, Rotorua Mail Centre, Rotorua 3046, New Zealand

[http://images.rotoruaNZ.com/stationery/rlc_logo_blue.gif?v=4]http://www.rotorualakescouncil.nz/?utm_source=Stationery&utm_medium=Email&utm_content=Marc%2BSpijkerbosch&utm_campaign=Stationery

This message has been scanned for malware by Websense. www.websense.com<<http://www.websense.com/>>

Click here<https://www.mailcontrol.com/sr/WrU5AWAP5c_GX2PQPOmvUqBwqoF6QZLOCOp-a6fH3eB9-A9FCBX4F8QbPCyVGI5Rdl1HP0vi-UPJaydNu2tBwg==>> to report this email as spam.

Craig Wilson – CEO
Kilwell Fibretube
07 3459094
craigw@kilwell.co.nz



5 February 2019

Hemo Sculpture Project

Press Statement - For Immediate Release

Kilwell Fibretube ~~have~~ has been made aware of some comments posted on Facebook on February 4th. Kilwell wishes to advise that we have not been involved in the preparation and distribution of the information in that post and that some of the post is factually incorrect.

We can confirm that there has been an increase in the forecasted budget-cost for this project. This has primarily been driven by an increase in the certification requirement which is mandatory for any structure or building that is erected in the public domain.

In this case the Importance Level of the building-structure was increased which meant that the sculpture is now required to withstand 175 km/h winds instead of the original 135 km/h winds. This change happened after we were approximately 6 months into the construction phase. The increase-change required changes-alterations to the design and, material laminate, and increased testing to what was originally proposed. These changes then had to be re-tested and re-certified.

It is important to ~~know~~ note that neither Rotorua Lakes Council nor Scion are ~~not~~ responsible for any changes to the design specifications. Scion has only been involved only with the testing of some components required for certification. The changes to the design have been driven by qualified engineers ~~that-who~~ have been contracted to certify the structure by the New Zealand Transport Agency (NZTA) due to its location within a national-roadstate highway roundabout.

Kilwell Fibretube originally provided a quote to the RLC-Council based on known costs at the time, based on the original certification levels required. Some of the costs at that stage were unknown and were yet to be determined, and therefore estimates were used ~~that-which~~ were to be finalised once the design and certification was completed.

Kilwell Fibretube wishes to make clear ~~that-the~~ Rotorua Lakes Council has not put any undue influence on us or put us in a position we are not comfortable with. All parties have been very patient in this ground-breaking project and are working closely together to reach a resolution.

End

From: Craig Tiriana
Sent: Thursday, 7 February 2019 11:58 a.m.
To: Craig Wilson
Subject: Re: Hemo Sculpture Update @ 7-Feb-19.pptx

Cheers. Still only a third through agenda. Slow going to date.

Sent from my Samsung Galaxy smartphone.

----- Original message -----

From: Craig Wilson <craigw@kilwell.co.nz>
Date: 7/02/19 11:43 AM (GMT+12:00)
To: Craig Tiriana <Craig.Tiriana@rotorualc.nz>
Subject: Hemo Sculpture Update @ 7-Feb-19.pptx

Hi Craig,

Presentation as attached -- have broken down cost overrun into 3 areas.

Installation page is included but have hidden as its probably not applicable to conversation today.

Let me know thoughts and timing.

Regards
Craig

Click [here](#) to report this email as spam.

From: Craig Tiriana
Sent: Thursday, 7 February 2019 12:24 p.m.
To: Craig Wilson
Subject: Re: Hemo Sculpture Update @ 7-Feb-19.pptx

Timing about 1.30pm guesstimate Just trying to get a look at presentation.

Sent from my Samsung Galaxy smartphone.

----- Original message -----

From: Craig Wilson <craigw@kilwell.co.nz>
Date: 7/02/19 11:43 AM (GMT+12:00)
To: Craig Tiriana <Craig.Tiriana@rotorualc.nz>
Subject: Hemo Sculpture Update @ 7-Feb-19.pptx

Hi Craig,

Presentation as attached – have broken down cost overrun into 3 areas.

Installation page is included but have hidden as its probably not applicable to conversation today.

Let me know thoughts and timing.

Regards
Craig

Click [here](#) to report this email as spam.

From: Craig Wilson <craigw@kilwell.co.nz>
Sent: Thursday, 7 February 2019 12:43 p.m.
To: Craig Tiriana
Subject: RE: Hemo Sculpture Update @ 7-Feb-19.pptx

Yep understood - don't worry I talk fast and will keep them on track

-----Original Message-----

From: Craig Tiriana <Craig.Tiriana@rotorualc.nz>
Sent: Thursday, 7 February 2019 12:26 PM
To: Craig Wilson <craigw@kilwell.co.nz>
Subject: Re: Hemo Sculpture Update @ 7-Feb-19.pptx

Content looks fine, quite a bit of detail, which means youll need to keep it moving or they may dive in.

Sent from my Samsung Galaxy smartphone.

----- Original message -----

From: Craig Wilson <craigw@kilwell.co.nz>
Date: 7/02/19 11:43 AM (GMT+12:00)
To: Craig Tiriana <Craig.Tiriana@rotorualc.nz>
Subject: Hemo Sculpture Update @ 7-Feb-19.pptx

Hi Craig,

Presentation as attached - have broken down cost overrun into 3 areas.

Installation page is included but have hidden as its probably not applicable to conversation today.

Let me know thoughts and timing.

Regards
Craig

Click here<<https://www.mailcontrol.com/sr/MZbqvYs5QwJvpeaetUwhCQ==>> to report this email as spam.

This message has been scanned for malware by Websense. www.websense.com

From: Craig Tiriana
Sent: Thursday, 7 February 2019 1:18 p.m.
To: Craig Wilson
Subject: Re: Hemo Sculpture Update @ 7-Feb-19.pptx

1.30pm is looking likely. Moving fast one item to come after current.

Sent from my Samsung Galaxy smartphone.

----- Original message -----

From: Craig Wilson <craigw@kilwell.co.nz>
Date: 7/02/19 12:43 PM (GMT+12:00)
To: Craig Tiriana <Craig.Tiriana@rotorualc.nz>
Subject: RE: Hemo Sculpture Update @ 7-Feb-19.pptx

Yep understood - don't worry I talk fast and will keep them on track

-----Original Message-----

From: Craig Tiriana <Craig.Tiriana@rotorualc.nz>
Sent: Thursday, 7 February 2019 12:26 PM
To: Craig Wilson <craigw@kilwell.co.nz>
Subject: Re: Hemo Sculpture Update @ 7-Feb-19.pptx

Content looks fine, quite a bit of detail, which means you'll need to keep it moving or they may dive in.

Sent from my Samsung Galaxy smartphone.

----- Original message -----

From: Craig Wilson <craigw@kilwell.co.nz>
Date: 7/02/19 11:43 AM (GMT+12:00)
To: Craig Tiriana <Craig.Tiriana@rotorualc.nz>
Subject: Hemo Sculpture Update @ 7-Feb-19.pptx

Hi Craig,

Presentation as attached - have broken down cost overrun into 3 areas.

Installation page is included but have hidden as its probably not applicable to conversation today.

Let me know thoughts and timing.

Regards
Craig

Click here<<https://www.mailcontrol.com/sr/MZbqvYs5QwJvpeaetUwhCQ>> to report this email as spam.

Hemo Sculpture Council Update

Update Meeting

7th Feb 2019

Agenda

1. Reminder of Original Quote
2. and Original Timetable
3. Current Status of Manufacturing
4. Revised Timetable
5. Cost vs Budget
 1. 3D printing
 2. Laminate & Chevron
 3. Estimates

1. Next Steps – (Original Presentation)

1. Engineer approval to ensure proposal meets same standards as galvanised option (RDC to supply).
2. Need sign off of RDC intention & order.
3. Need building to be finished before full production
4. Confirm Carbon & Fibreglass sock delivery time
5. Order & confirm delivery of 3D printers
6. Finalise Price

2. Original Project Timeframe

Timeframe	Weeks	Date
RDC/Te Puia Approval		1-Dec-17
Gurit Preliminary Report	2	15-Dec-17
Christmas break - Order Printers & Material	4	12-Jan-18
Gurit PS1 Certification	5	16-Feb-18
3D Print Tubing (18-23hrs/7 days per week)	13	18-May-18
Assembly of Tubing	5	24-Jun-18
Assembly & Install ">", Mania & Capping	3	17-Jul-18
Painting - Prep, Clear & 2 x Nyalic	3	8-Aug-18
Installation - Base, clamps, freight etc	2	22-Aug-18
Total Time (Weeks)	21.6	
Estimated Completion Date		31-Aug-18

3. Current Manufacturing Status

- 3D printing of tubes to finish end of next week
 - 2 outer tubes (14 & 15) – 9 & 11 pieces each.
 - New outer tips week after next.
 - Then chevrons to print (approx. 2 weeks work).
 - Currently 168 of 486 (35%) done.
 - Plate is all made – but needs to be cut & CNC'd.
 - Can print 40 per day(2hrs each) and manufacture 14/day – so progress is fast on these.
- Inner tube set is all finished.
- Outer tube set is 93% printed and 82% manufactured.
- Testing to still ongoing – next week is tube to tube and base testing.

3. Current Manufacturing Status

- Protech to have final rings drilled end of next week.
- Templates partly checked to plinth yesterday – some work to be done there to clean up site and straighten bolts.
- Option for them to help with levelling on install.
- Testing
 - Tube to tube being made now
 - Finalisation of design & qty has been difficult.
 - This will finalise the laminate for joining tubes – needed for assembly
 - We are recycling tubes and reducing qty to help save costs.

4. Revised Timetable

- Base rings to arrive around Feb- 8 - 12th
- Finish printing tubes by Feb-15th (with 2 weeks for chevrons)
- Start assembly Feb-11th (As soon as base ring arrives)
- Install Scaffolding Feb-22nd
- Inner finished Apr-30th (6 weeks)
- Outer finished May-10th (8 weeks)
- Installation Sunday May 19th or 26th – dependent on weather & traffic.

5. Budget vs Costs

	Total Budget	YTD Actual Spend	Estimated Spend to Go	Total Estimate	Over Spend	Over Spend Breakdown			Est. Costs
						3D File Delay	Chevrons Design & Test		
Materials	\$68,922	\$129,590	\$25,000	\$154,590	(\$85,668)	\$30,000	\$55,668		
Testing & Certification	\$16,600	\$50,328	\$12,210	\$62,538	(\$45,938)	\$20,000	\$25,938		
Scaffolding	\$6,250	\$0	\$16,000	\$16,000	(\$9,750)			\$9,750	
Transport	\$6,400	\$0	\$15,000	\$15,000	(\$8,600)			\$8,600	
Wages	\$247,108	\$200,721	\$73,675	\$274,396	(\$27,288)		\$27,288		
Others	\$25,936	\$0	\$53,054	\$53,054	(\$27,118)		\$22,118	\$25,000	
	\$371,216	\$380,638	\$194,939	\$575,577	(\$204,361)	\$50,000	\$131,012	\$43,350	

- Materials have been driven by extra layers – especially in relation to resin & consumables.
- Testing & Certification is by extra testing, rechecking of design and preparing 3D files of inner helix.
- Scaffolding is due to 2 structures instead of 1 – and extra time up (12 weeks)
- Transport is now confirmed by chopper – but includes no allowance for NZTA?
- Wages is due to extension of time – offset by 3D printing savings and loss of margin & buffer!
- Other includes the Mania plates (still TBC) and base plates which has been driven by materials 26mm 316 stainless.

5.1 3D Printing

1. We relied on the Wellington based designer to supply files for the 3D printer – 10 files every day. This proved unreliable.
2. We noticed errors in his print files and lost confidence in his ability to do the job – he was out of his depth.
3. By May we had only printed 25% - when budget was 75%. At that stage we had 3 instances of weeks with no files to print. We had planned to finish printing at end of May – instead we were at 30% and have only just finishing this week.
4. At our insistence we took ½ of the project to Gurit to chop the file into 3D printable files. Gurit took 2 weeks to prepare and finish 50% the structure.
5. It had taken the other engineer 4 months previously to do 30%. Later it was discovered that ¼ of what he had done was incorrect and had to be reprinted & remade.
6. This delayed the project considerably and increased costs due to reprints and cost to employ Gurit to create the print files and recheck what we had done (estimated \$30k plus an additional \$20k engineering costs).

5.2 Laminate Change & Chevrons

1. Original proposed design had 5 layers of material – this was insufficient to meet the IL1 certification and was increased to 12 layers for the outer and 20 layers for the inner helix. There was no change at that time to chevrons and no change to original budget.
2. The was because we calculated that we could prepare, bag and vacuum 5 layers (instead of 1) – so the increase in materials was offset by savings in labour. Plus we absorbed extra costs of material due to fixed cost.
3. However when the IL was increased to 2 the wind loads went from 135 to 175 km/hr the modelling showed a bigger problem – the chevrons started peeling.
4. The only remedy for this was to install plate between the tubes, and initially 50 of them would be required to go through the tubes.
5. Discussions with Opus and completed testing have show that the laminated chevron plate design is stronger than modelled and these have been reduced the through plates to 18 in total. But all chevrons require backing plate.
6. This is a considerable increase in material costs and time to make, test and manufacture.

5.3 Estimates

1. Mania plates still need to be finalised and costed – original quote had \$5k in as an estimate as design was not final.
2. Base rings were in at \$5k but final price is \$33k. This is due to Opus changing design to 26mm steel.
3. Transport was \$5k estimate – estimated price for chopper lift is \$15k – but this does not include NZTA traffic mngt (Est. \$20k).

Installation

- Alan Beck from Beck Helicopters Ltd can do the job.
- Using Super Huey – max lift 1,820Kg
- Inner = 1,540kg & Outer = 1,760kg – need 50kg form clearance due to precision drop.
- Scaffolding erected against building – refer diagram.
- Alan is working up flight plan and safety plan currently.
- Flight will go from Kilwell out to lake, up to airport and across to hills and then out and around into Hemo.
- Temp stop in carpark, reset, remove sail and then drop into place.
- Refuel and then repeat with inner. (need reserved area for landing & refuel)
- Drop onto 4x2 and then pull out once centred on bolts.
- Base plate to be cut with extra 10mm bolt counter sunk hole clearance to allow ease of locating.
- Each bolt to have plastic pointed covers to protect threads.

From: Craig Wilson <craigw@kilwell.co.nz>
Sent: Wednesday, 13 February 2019 11:15 p.m.
To: Craig Tiriana; Henry Weston
Subject: RE: Hemo Rd Roundabout sculpture
Attachments: 20190212_145419_resized_1.jpg; 20190212_145724_resized_1.jpg

Importance: High

Hi Henry/Craig,

As an update from Meeting on Monday. I have discussed this with the owners they are still of the same mind that as we have sacrificed all thoughts of any profit as well as absorbing overhead costs around the 3D printing and other capex (such as the building of the 3D printer room, vacuum pumps, stands etc). These amount to almost \$100k in actual capital spend to date plus there is an estimated \$65 to \$130k in margin that we should be making on a job like this which we have contributed (neither of which have been included in the costs submitted to you so far).

On a positive point we received the inner base plate today - and we almost have the 2nd to last test tubes ready for laminate testing. This means we will be ready to start assembling the inner helix next week.

The owners have asked that we get some sort of commitment on how the remainder of the project will be funded before we begin this phase of the production. At this stage if we are forced to stop we will lose \$80,000, but we are not willing to continue to spend the remaining \$200k+ to finish the job if we are the only ones willing to contribute.

Can I suggest we have a conference call tomorrow to discuss if possible before your meeting - I have a window between 9 and 10am if that works?

Regards
Craig

-----Original Message-----

From: Craig Tiriana <Craig.Tiriana@rotorualc.nz>
Sent: Thursday, 7 February 2019 4:58 PM
To: Craig Wilson <craigw@kilwell.co.nz>
Subject: RE: Hemo Rd Roundabout sculpture

Entirely over to you and your company's needs. From RLC "we've been clear we are still finalising details with contractors: ie price and installation dates. But we have confirmed a delay ie obviously won't be installed this month but expected before the end of our financial year.

Craig Tiriana Kaihautū – Ohu Toihautū | Manager, Chief Executive's Office
07 348 4199 | 027 838 9961 | craig.tiriana@rotorualc.nz | rotorualakescouncil.nz

-----Original Message-----

From: Craig Wilson [mailto:craigw@kilwell.co.nz]
Sent: Thursday, 7 February 2019 4:03 p.m.
To: Craig Tiriana

Subject: RE: Hemo Rd Roundabout sculpture

Thanks Craig,

With regards our response do you have any problems if we then send that to them, or only if we are asked directly.

We have also been in touch with our temp staff provider and they are speaking with the employee directly.

Regards

Craig

-----Original Message-----

From: Craig Tiriana <Craig.Tiriana@rotorualc.nz>

Sent: Thursday, 7 February 2019 3:30 PM

To: Craig Wilson <craigw@kilwell.co.nz>

Subject: Fwd: Hemo Rd Roundabout sculpture

Hi Craig,

Well done today. Media have asked further questions. Council response below.

Henry will be in touch re where we are.

Cheers

Craig

Sent from my Samsung Galaxy smartphone.

----- Original message -----

From: Ingrid Tiriana <Ingrid.Tiriana@rotorualc.nz>

Date: 7/02/19 3:27 PM (GMT+12:00)

To: 'Leah Tebbutt' <leah.tebbutt@nzme.co.nz>

Subject: RE: Hemo Rd Roundabout sculpture

Hi Leah,

From Operations Group Manager Henry Weston: Council is still finalising details with the contractors. Construction on site won't be happening in February as we had anticipated, but we expect it will be before the end of the financial year.

Nga mihi

Ingrid

Ingrid Tiriana Kaihautū Whakapā/Council Communications Manager

P: 07 351 8110<tel:+6473518110> | M: 021 190 8868<tel:+64211908868> | E:

ingrid.tiriana@rotorualc.nz<mailto:ingrid.tiriana@rotorualc.nz> | W:

rotorualakescouncil.nz<http://rotorualakescouncil.nz/?utm_source=Stationery&utm_medium=Email&utm_content=Ingrid%2BTiriana&utm_campaign=Stationery>

Caution: The content of this email is confidential and may be legally privileged. If it is not intended for you, please email the sender immediately and destroy the original message. You may not copy, disclose or use the contents in any way. Thank You.

From: Leah Tebbutt [mailto:leah.tebbutt@nzme.co.nz]
Sent: Thursday, 7 February 2019 3:17 p.m.
To: Ingrid Tiriana
Subject: Re: Hemo Rd Roundabout sculpture

Hi Ingrid,

Could you please respond to my original questions if that is the case. It is scheduled in our diary that the sculpture would be installed this month and we would really like to cover it and I know many residents are anticipating the unveiling.

Here are the questions from the original email.

- * What is the date that council expect the sculpture to start construction at the roundabout and the day it will be revealed and completed?
- * Will installation effect traffic?
- * Is the price tag on this project the same or has it risen due to the delays?

Ngā mihi

LEAH TEBBUTT
GENERAL & MĀORI AFFAIRS JOURNALIST

D: 07- 349- 7477 M: 027- 263- 7204

E: leah.tebbutt@nzme.co.nz

[Image removed by sender. New Zealand Media and Entertainment.]<<http://www.nzme.co.nz/>>

[Image removed by sender. Rotorua Daily Post]<http://www.nzherald.co.nz/rotorua-daily-post/news/headlines.cfm?c_id=1503438>

From: Ingrid Tiriana <Ingrid.Tiriana@rotorualc.nz>
Sent: 07 February 2019 15:12
To: Leah Tebbutt
Subject: FW: Hemo Rd Roundabout sculpture

Kia ora Leah,

There is no further update today.

Nga mihi

Ingrid

Ingrid Tiriana Kaihautū Whakapā/Council Communications Manager
P: 07 351 8110<tel:+6473518110> | M: 021 190 8868<tel:+64211908868> | E:
ingrid.tiriana@rotorualc.nz<mailto:ingrid.tiriana@rotorualc.nz> | W:
rotorualakescouncil.nz<http://rotorualakescouncil.nz/?utm_source=Stationery&utm_medium=Email&utm_content=Ingrid%2BTiriana&utm_campaign=Stationery>

Caution: The content of this email is confidential and may be legally privileged. If it is not intended for you, please email the sender immediately and destroy the original message. You may not copy, disclose or use the contents in any way. Thank You.

From: Ingrid Tiriana
Sent: Thursday, 7 February 2019 9:32 a.m.
To: 'Leah Tebbutt'; News Rotorua
Subject: RE: Hemo Rd Roundabout sculpture

Morena Leah,

Council is working with the contractors involved and will be updating elected members today. There may be more information following that update.

Nga mihi

Ingrid

Ingrid Tiriana Kaihautū Whakapā/Council Communications Manager
P: 07 351 8110<tel:+6473518110> | M: 021 190 8868<tel:+64211908868> | E:
ingrid.tiriana@rotorualc.nz<mailto:ingrid.tiriana@rotorualc.nz> | W:
rotorualakescouncil.nz<http://rotorualakescouncil.nz/?utm_source=Stationery&utm_medium=Email&utm_content=Ingrid%2BTiriana&utm_campaign=Stationery>

Caution: The content of this email is confidential and may be legally privileged. If it is not intended for you, please email the sender immediately and destroy the original message. You may not copy, disclose or use the contents in any way. Thank You.

From: Leah Tebbutt [mailto:leah.tebbutt@nzme.co.nz]
Sent: Wednesday, 6 February 2019 10:12 a.m.
To: News Rotorua
Subject: Hemo Rd Roundabout sculpture

Kia ora and happy Waitangi day 😊

Wanting to grab some information about the sculpture at the Hemo Rd Roundabout that is supposed to be completed this month. Could I have this back by mid morning tomorrow.

- * What is the date that council expect the sculpture to start construction at the roundabout and the day it will be revealed and completed?
- * Will installation effect traffic?
- * Is the price tag on this project the same or has it risen due to the delays?

Ngā mihi

LEAH TEBBUTT

GENERAL & MĀORI AFFAIRS JOURNALIST

D: 07- 349- 7477 M: 027- 263- 7204

E: leah.tebbutt@nzme.co.nz

[Image removed by sender. New Zealand Media and Entertainment.]<<http://www.nzme.co.nz/>>

[Image removed by sender. Rotorua Daily Post]<http://www.nzherald.co.nz/rotorua-daily-post/news/headlines.cfm?c_id=1503438>

NOTICE

This email and any attachments are strictly confidential and subject to copyright. They may contain privileged information. If you are not the intended recipient please delete the message and notify the sender. You should not read, copy, use, change, alter or disclose this email or its attachments without authorisation. The company and any related or associated companies do not accept any liability in connection with this email and any attachments including in connection with computer viruses, data corruption, delay, interruption, unauthorised access or unauthorised amendment. Any views expressed in this email and any attachments do not necessarily reflect the views of the

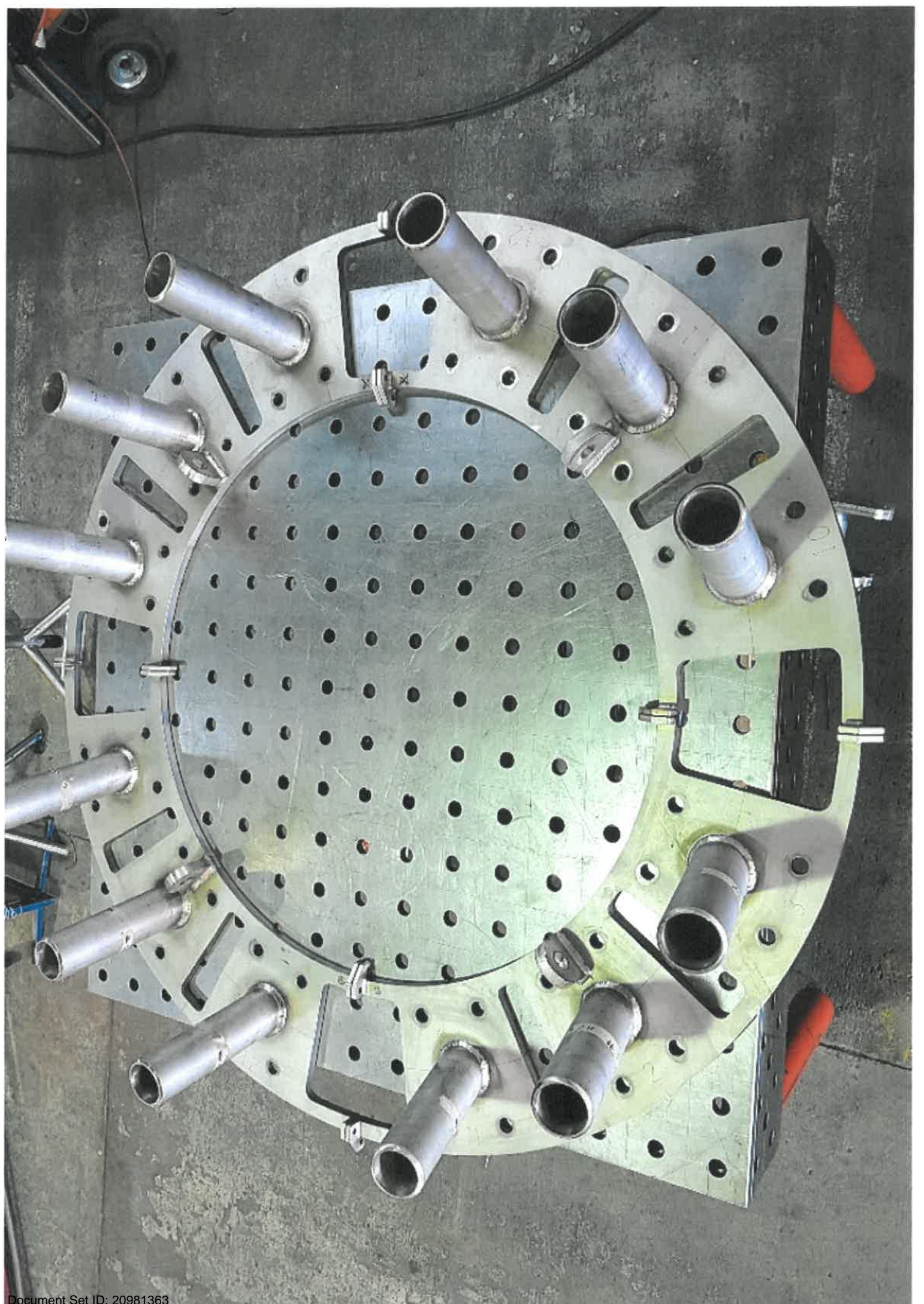
company or the views of any of our related or associated companies. NZME Ltd / NZME Holdings Ltd / NZME Publishing Ltd / NZME Radio Ltd / NZME Educational Media Ltd / GrabOne Ltd

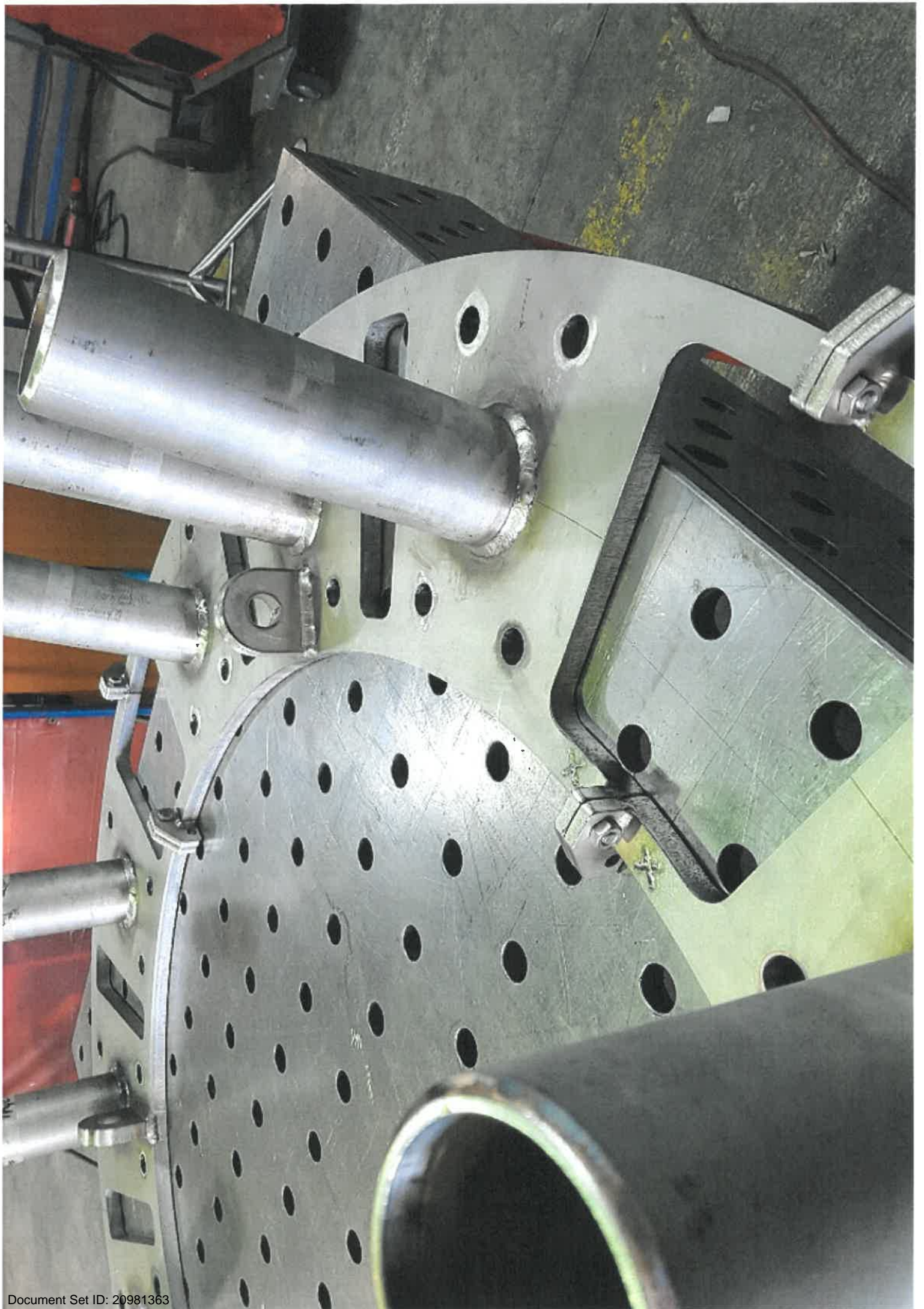
Click here<<https://www.mailcontrol.com/sr/MZbqvYs5QwJvpeaetUwhCQ==>> to report this email as spam.

This message has been scanned for malware by Websense. www.websense.com<<http://www.websense.com/>>

NOTICE

This email and any attachments are strictly confidential and subject to copyright. They may contain privileged information. If you are not the intended recipient please delete the message and notify the sender. You should not read, copy, use, change, alter or disclose this email or its attachments without authorisation. The company and any related or associated companies do not accept any liability in connection with this email and any attachments including in connection with computer viruses, data corruption, delay, interruption, unauthorised access or unauthorised amendment. Any views expressed in this email and any attachments do not necessarily reflect the views of the company or the views of any of our related or associated companies. NZME Ltd / NZME Holdings Ltd / NZME Publishing Ltd / NZME Radio Ltd / NZME Educational Media Ltd / GrabOne Ltd





From: Craig Wilson <craigw@kilwell.co.nz>
Sent: Thursday, 21 February 2019 1:15 p.m.
To: Craig Tiriana; Henry Weston
Subject: Re: Hemo Funding Proposal

Yep no problem. See you then

Regards
Craig Wilson

From: Henry Weston <Henry.Weston@rotorualc.nz>
Sent: Thursday, February 21, 2019 1:09:08 PM
To: Craig Wilson; Craig Tiriana
Subject: Re: Hemo Funding Proposal

Can do Craig...
U ok coming to us?
H

----- Original message -----

From: Craig Wilson <craigw@kilwell.co.nz>
Date: 21/02/19 12:46 PM (GMT+12:00)
To: Henry Weston <Henry.Weston@rotorualc.nz>, Craig Tiriana <Craig.Tiriana@rotorualc.nz>
Subject: RE: Hemo Funding Proposal

Hi Henry,

I have to pick a customer up from the Airport at 5pm today, is it ok to move the meeting forward to 3.30om as you originally suggested?

Sorry for the change – they were originally going to rent a car but have now asked that we pick them up instead.

Regards
Craig

From: Craig Wilson
Sent: Wednesday, 20 February 2019 12:27 PM
To: 'Henry Weston' <Henry.Weston@rotorualc.nz>; Craig Tiriana <Craig.Tiriana@rotorualc.nz>
Subject: RE: Hemo Funding Proposal

Could we do 4 to 5 tomorrow?

From: Henry Weston <Henry.Weston@rotorualc.nz<mailto:Henry.Weston@rotorualc.nz>>
Sent: Wednesday, 20 February 2019 9:54 AM
To: Craig Wilson <craigw@kilwell.co.nz<mailto:craigw@kilwell.co.nz>>; Craig Tiriana <Craig.Tiriana@rotorualc.nz<mailto:Craig.Tiriana@rotorualc.nz>>
Subject: RE: Hemo Funding Proposal

Hi Craig and thanks for this. Good to hear from you.

Yes, let's do tomorrow afternoon.
Ideal for me 1-2, or 3.30-5.....how does that work?

Henry

From: Craig Wilson [mailto:craigw@kilwell.co.nz]
Sent: Tuesday, 19 February 2019 5:08 p.m.
To: Henry Weston; Craig Tiriana
Subject: Hemo Funding Proposal

Hi Gentlemen,

Are you available Thursday afternoon to discuss the funding issue we have on the sculpture?

Unfortunately I have a number of overseas suppliers visiting and a large building project tomorrow this week but currently have Thursday afternoon available if that works for you?

I have spoken further to the owners and have a proposal to put to put on the table, but there has also been further movements on costs and outcomes that we need to discuss.

Regards

Craig Wilson (BMS, CA)
Chief Executive | Kilwell Sports Group
P: +64 (0)7 345 9094 Extn 832 M: +64 (0)21 2331190 or F: +64 (0)7 345 5149
Email. Craigw@kilwell.co.nz<mailto:Craigw@kilwell.co.nz> | Web www.kilwell.co.nz<http://www.kilwell.co.nz/> or www.kilwellfibretube.co.nz
490 Te Ngae Road, Rotorua 3010, Private Bag 3033, Rotorua 3046, New Zealand
[cid:image002.jpg@01CC4C45.7E18A320]<http://www.kilwell.co.nz/> [2018_WRBEA_Winner_Logo 25%]
[cid:image001.jpg@01CC4C45.7E18A320]<http://www.facebook.com/KilwellSports> Like us on
Facebook<<http://www.facebook.com/KilwellSports>>

Please consider the environment before printing this e-mail
The information in this email is confidential. It is intended solely for the addressee, access to this email by anyone else is unauthorised.
If you are not the intended recipient, any disclosure, copying, distribution or any action taken or omitted to be taken in reliance on it is prohibited.

Click here<<https://www.mailcontrol.com/sr/MZbqvYs5QwJvpeaetUwhCQ==>>> to report this email as spam.

This message has been scanned for malware by Websense. www.websense.com<<http://www.websense.com/>>